



UNIVERSIDADE
ESTADUAL DE LONDRINA

MICHELE LUNARDI

**CARACTERIZAÇÃO MOLECULAR DO GENE L1 DE UM
PROVÁVEL NOVO TIPO DE PAPILOMAVÍRUS BOVINO
IDENTIFICADO NO BRASIL**

Londrina
2008

MICHELE LUNARDI

**CARACTERIZAÇÃO MOLECULAR DO GENE L1 DE UM
PROVÁVEL NOVO TIPO DE PAPILOMAVÍRUS BOVINO
IDENTIFICADO NO BRASIL**

Dissertação apresentada ao Programa de Pós-Graduação, em Ciência Animal da Universidade Estadual de Londrina, como requisito parcial à obtenção do título de Mestre em Ciência Animal (Área de Concentração: Sanidade Animal)

Orientador: Prof. Dr. Amauri Alcindo Alfieri

Londrina
2008

MICHELE LUNARDI

**CARACTERIZAÇÃO MOLECULAR DO GENE L1 DE UM PROVÁVEL
NOVO TIPO DE PAPILOMAVÍRUS BOVINO IDENTIFICADO NO
BRASIL**

Dissertação apresentada ao Programa de Pós-Graduação, em Ciência Animal da Universidade Estadual de Londrina, como requisito parcial à obtenção do título de Mestre em Ciência Animal (Área de Concentração: Sanidade Animal)

BANCA EXAMINADORA

Profa. Dra. Maria Helena Pelegrinelli Fungaro
Universidade Estadual de Londrina

Profa. Dra. Flora Satiko Kano
Universidade Norte do Paraná

Prof. Dr. Amauri Alcindo Alfieri
Universidade Estadual de Londrina

Londrina, 27 de março de 2008.

O presente trabalho foi realizado no Laboratório de Virologia Animal, Departamento de Medicina Veterinária Preventiva, Centro de Ciências Agrárias, Universidade Estadual de Londrina, como requisito para a obtenção do título de Mestre em Ciência Animal pelo Programa de Pós-Graduação em Ciência Animal (Área de Concentração: Sanidade Animal), sob orientação do Prof. Dr. Amauri Alcindo Alfieri.

Os recursos financeiros para o desenvolvimento do projeto foram obtidos junto às agências e órgãos de fomento à pesquisa abaixo relacionados:

- 1. CNPq: Conselho Nacional de Desenvolvimento Científico e Tecnológico / MCT**
- 2. CAPES: Coordenação de Aperfeiçoamento de Pessoal de Nível Superior / MEC**
- 3. FAP/PR: Fundação Araucária de Apoio ao Desenvolvimento Científico e Tecnológico do Paraná / SETI**
- 4. FINEP: Financiadora de Estudos e Projetos / MCT**

DEDICATÓRIA

Aos meus queridos pais, Claudia e Arnaldo, e a minha amada irmã, Milena, pelo imensurável amor e carinho, pelo incentivo, pela constante preocupação com meus estudos e, principalmente, pela transmissão de valores morais valiosos e essenciais.

A todos os familiares de Osasco, especialmente à minha querida avó e madrinha, Guiomar, e ao meu avô, João, pela torcida, e pela compreensão de que a privação do convívio diário seria necessária para minha formação profissional.

Aos meus queridos avós, Francisca e Arnaldo (*in memoriam*), pelo incentivo e encorajamento desde a infância.

Aos meus queridos amigos caninos, Fifi, Pantera, Kelly e Lilica, que alegraram todos os meus dias e cujo amor compartilhado me impulsionou para seguir esta maravilhosa profissão.

AGRADECIMENTOS

Ao nosso Pai Celestial, por sua obra perfeita, cuja complexidade e harmonia despertam o interesse do homem em tentar compreendê-la.

Ao professor e orientador Dr. Amauri A. Alfieri, pelo exemplo de dedicação e fascínio pela área de Virologia Animal, e cujos ensinamentos, desde os tempos da graduação, me levaram a dedicar meus esforços na mesma área. Agradeço também pela oportunidade e confiança em meu trabalho, assim como pela coragem e sinceridade em apontar minhas falhas para que eu possa me aperfeiçoar sempre.

À professora Dra. Alice F. Alfieri, também pelo exemplo profissional e cuja didática no ensino constitui um dos objetivos que ainda quero alcançar. Agradeço também pelo carinho e amizade, e pelas eventuais críticas construtivas e elogios revigorantes.

Aos membros da banca de qualificação: Prof. Dr. João Luís Garcia e Profa. Alice F. Alfieri, pelas indispensáveis contribuições.

Agradecimentos especiais ao Prof. Dr. Marcos Bryan Heinemann, pelo treinamento em análise de seqüências e filogenia, o qual foi fundamental para a realização deste trabalho. Agradeço também pela amizade, pronta disponibilidade e elucidação de diversas dúvidas; à Profa. Dra. Maria Helena Pelegrinelli Fungaro, coordenadora do Laboratório de Genética Molecular de Microrganismos do Departamento de Biologia Geral, Centro de Ciências Biológicas, por ter disponibilizado seu laboratório para a realização de todas as reações de seqüenciamento utilizadas neste trabalho. Agradeço também pela colaboração direta na condução deste trabalho, pelos valiosos ensinamentos transmitidos, pela imensa paciência, pela grande receptividade em seu laboratório, e pela amizade.

Ao Conselho Nacional de Desenvolvimento Científico e Tecnológico (CNPq) pela concessão da Bolsa de Mestrado.

A todos os professores do Programa de Pós Graduação em Ciência Animal pela formação acadêmica científica.

Às técnicas de laboratório, Kerlei, Dalíria e Maria, pela colaboração indireta neste trabalho, e pelos momentos de descontração e amizade.

Aos funcionários do Departamento de Medicina Veterinária Preventiva, em especial o Zé da Micro, pela cordialidade e receptividade no laboratório de Microbiologia, e pelo grande exemplo de profissionalismo que constitui.

Aos secretários Valdecir, Reinaldo e Helenice, pela paciência e ajuda.

Aos grandes amigos do laboratório de Virologia: Alexandre (Creuso), pelos numerosos conselhos, reflexões e conversas, assim como pela grande amizade, cumplicidade, e agradável convívio; Betinha, pela amizade divertidíssima, pelo exemplo de sinceridade e ética profissional, e pelos ensinamentos desde o tempo de estágio. À Marlise, primeiramente por ter me iniciado no trabalho com o papilomavírus, por confiar no meu trabalho, pelos momentos de cumplicidade e carinho, pela grande amizade, e pela colaboração direta neste trabalho. Agradeço também aos amigos Danilo, Aline e Daniel (Frango), pelos momentos de descontração e pela amizade. Às grandes amigas de outros laboratórios: Flora e Jú Dias, cujo convívio foi realmente enriquecedor e deixou saudades; Dani, Lara e Fran, pela participação fundamental neste trabalho, pela paciência, amizade, dicas e pelo valioso convívio.

Às minhas grandes amigas da veterinária, Pamela, Vani, Valeska, Josy, Roberta e Mari, que sempre torceram por mim, compreenderam e respeitaram minhas escolhas, e cuja amizade espero que perdure para sempre.

À minha especial amiga, Paula, pelos incontáveis conselhos, pela grande amizade, pela compreensão, pela paciência, pelo respeito, e por ser uma das poucas pessoas que compreendem meus valores, meus propósitos, meus objetivos e minha conduta.

À "tchurminha" que sempre torceu por mim e que me ajuda a descontraír. E, finalmente, a todos que contribuíram direta ou indiretamente para a realização deste trabalho.

LUNARDI, M. **Caracterização molecular do gene L1 de um provável novo tipo de papilomavírus bovino identificado no Brasil.** 2008. 75f. Dissertação (Mestrado em Ciência Animal) – Universidade Estadual de Londrina, Londrina. 2008.

RESUMO

O papilomavírus (PV) constitui um grupo diverso de pequenos oncovírus não-envelopados e com genoma DNA fita dupla circular, classificados na família *Papillomaviridae*. Em bovinos são descritos 10 tipos de papilomavírus bovino (BPV) que, com base na identidade de nucleotídeos da proteína estrutural L1, estão distribuídos nos gêneros *Deltapapillomavirus* (BPV-1 e -2), *Epsilonpapillomavirus* (BPV-5 e -8), *Xipapillomavirus* (BPV-3, -4, -6, -9 e -10) e em um gênero ainda não definido (BPV-7). A infecção por diversos tipos de BPV tem sido relacionada a diferentes quadros clínicos em bovinos, destacando-se a papilomatose cutânea. A identificação dos tipos virais que determinam sinais clínicos e daqueles que resultam em infecções subclínicas tem sido realizada por meio da técnica da PCR, tanto em bovinos quanto em seres humanos. Como a L1 é a proteína mais conservada entre os PVs, foram desenvolvidos oligonucleotídeos iniciadores (*primers*) consensuais e genéricos, que apresentam alta identidade de nucleotídeos com seqüências conservadas da ORF L1. Esses sistemas de PCR têm sido utilizados para detectar uma grande variedade de tipos virais em amostras clínicas. O objetivo deste trabalho foi estabelecer o posicionamento filogenético de um provável novo tipo de BPV (BPV/BR-UEL2), identificado no Brasil, por meio da caracterização molecular de seu gene L1. O DNA do BPV/BR-UEL2 foi isolado a partir de um papiloma cutâneo, localizado na região axilar de uma vaca leiteira do Estado do Paraná. Como a análise anterior, envolvendo a seqüência de 475 pb obtida pela PCR utilizando os *primers* FAP59/FAP64, havia indicado que o BPV/BR-UEL2 era mais relacionado ao BPV tipo 4, os alinhamentos das regiões genômicas L2, L1 e LCR de alguns representantes do gênero *Xipapillomavirus* (BPV-3, -4 e -6) foram utilizados na elaboração de *primers* genéricos. Adicionalmente, o par de *primers* FAP também foi empregado, tanto na sua forma original quanto em combinações com os *primers* desenhados para este estudo. O primeiro segmento do gene L1 pôde ser obtido por meio de um sistema *semi-nested* (SN-PCR) empregando na primeira etapa de amplificação os *primers* L2Bf/FAP64, e o par de *primers* L2Bf/L1Br na segunda etapa de amplificação, resultando em um produto de PCR de 435 pb. A amplificação das regiões remanescentes do mesmo gene foi obtida a partir dos *primers* FAP59/FAP64 (475 pb) e L1Bf/LCRBr (1128 pb). Os referidos produtos de PCR foram posteriormente submetidos à clonagem e seqüenciamento. A análise filogenética envolvendo seqüências completas da ORF L1 revelou que a amostra BPV/BR-UEL2 estava relacionada aos tipos de BPV agrupados no gênero *Xipapillomavirus*. O provável novo tipo de BPV analisado neste estudo apresentou maior similaridade (78%) com a seqüência de nucleotídeos do gene L1 do BPV tipo 4, o que sugere a sua classificação no gênero *Xipapillomavirus*. No Brasil, apesar do caráter endêmico das infecções pelo BPV, a identificação dos tipos de BPV em rebanhos bovinos ainda é esporádica. Recentemente, a utilização do par de *primers* FAP59/FAP64 permitiu a identificação de quatro prováveis novos tipos virais, ainda não descritos no mundo, e provenientes de bovinos do estado do Paraná. No presente estudo, o posicionamento filogenético de um destes tipos virais, detectado a partir de uma lesão cutânea de uma vaca leiteira, foi determinado. A realização de estudos complementares envolvendo a epidemiologia molecular das infecções pelo BPV, tanto em rebanhos bovinos brasileiros quanto de diversas regiões geográficas ao redor do mundo, poderiam indicar a prevalência e checar a associação deste isolado com lesões cutâneas.

Palavras-chave: Bovino. Papilomatose cutânea. BPV. Provável novo tipo de BPV. Gene L1. Análise filogenética.

LUNARDI, M. **Molecular characterization of L1 gene of a putative new BPV type identified in Brazil.** 2008. 75p Dissertation (Master's Degree in Animal Science) – Universidade Estadual de Londrina, Londrina. 2008.

ABSTRACT

Papillomaviruses (PVs) comprise a highly diverse group of non-enveloped oncovirus classified in *Papillomaviridae* family, whose genome consists of a circular double-stranded DNA molecule. Depending on nucleotide identity presented in structural protein L1, 10 types of bovine papillomavirus (BPV) are described in cattle, being each of them located in genera *Deltapapillomavirus* (BPV-1 and -2), *Epsilonpapillomavirus* (BPV-5 and -8), *Xipapillomavirus* (BPV-3, -4, -6, -9, and -10), and an yet assigned genus (BPV-7). Infection by diverse BPV types has been associated with different clinical outcomes in cattle, being the cutaneous papillomatosis considered as an important cause of economic losses. The identification of viral types involved with either clinical manifestations or asymptomatic infections, has been mainly performed by PCR assay, both in cattle and humans. Since the L1 is considered as the most conserved protein in PVs, consensus and degenerate *primers*, manifesting a high degree of nucleotide identity with sequences in L1 ORF, has been designed to detect a broad range of viral types in clinical specimens. The aim of the current study is to state the phylogenetic position of a previously identified putative new BPV type (BPV/BR-UEL2) detected in Paraná state, Brazil, through the molecular characterization of its L1 gene. The BPV/BR-UEL2 was isolated from a papilloma located in the axillary region of a dairy cow. As the previous FAP sequence analysis had revealed our isolate as closest related to BPV type 4, alignments of L1, L2, LCR genomic regions of some *Xipapillomavirus* representatives (BPV-3, -4, and -6), were used on design of degenerate primers. In addition, the previously described FAP primer pair was also employed both in the original form as in combination with the designed primers. The first L1 segment of the Brazilian isolate could be achieved by a semi-nested PCR system (SN-PCR) employing L2Bf/FAP64 primers in the first round, and L2Bf/L1Br primer pair in the second round, which yielded an amplicon of 435 bp. The use of the FAP59/FAP64 (475 bp) and L1Bf/LCRBr (1128 bp) primer sets allowed the amplification of the remaining portions of the same gene. These three overlapping amplicons obtained from the L1 ORF were submitted to cloning and then sequenced. Phylogenetic analysis with complete L1 ORF sequences revealed the BPV/BR-UEL2 isolate as related with BPV types held in *Xipapillomavirus* genus, displaying the highest L1 nucleotide sequence similarity with BPV type 4 (78%), what suggests its classification in the *Xipapillomavirus* genus. In Brazil, despite the relatively common occurrence of BPV infections, the identification of BPV types in cattle herds is still sporadic. Recently, the use of the FAP59/FAP64 primer pair enabled the identification of four putative new BPV types, not yet described around the world, from cattle from Parana state. In the present study, we determine the phylogenetic position of one of these viral types, which was detected from a cutaneous lesion of a dairy cow. The realization of further studies involving the molecular epidemiology of BPV infections, in Brazilian cattle herds as much in diverse geographical areas around the world, could indicate its prevalence throughout the cattle as well as check its association with cutaneous lesions.

Keywords: Bovine. Cutaneous papillomatosis. BPV. Putative new BPV type. L1 gene. Phylogenetic analysis.

LISTA DE FIGURAS

Revisão de literatura

Figura 1 – Reconstrução filogenética baseada nas seqüências completas do gene L1 de 39 papilomavírus humanos e animais, classificados nos gêneros *Alphapapillomavirus* ao *Sigmapapillomavirus* 21

Phylogenetic position of a Brazilian uncharacterized bovine papillomavirus type in the *Xipapillomavirus* genus by sequencing of L1 open reading frame

Figure 1 – Schematic diagram showing the relative positions of the overlapping PCR fragments in L2, L1 and LCR regions. The length of each amplicon is indicated into the white box, while the primer sets are shown as arrows. The grey box represents the consensual sequence obtained 47

Figure 2 – Neighbour-joining phylogenetic tree of L1 ORFs of the BPVs, including that of the BPV/BR-UEL2 isolate (indicated by shading). The tree is divided into the previously determined genera *Deltapapillomavirus* (BPV-1 and -2), *Epsilonpapillomavirus* (BPV-5 e -8), *Xipapillomavirus* (BPV-3, -4, -6, -9, -10) and an unassigned PV genus (BPV-7). The numbers at the internal nodes represent the bootstrap support values determined for 1000 replications 48

LISTA DE TABELAS

Phylogenetic position of a Brazilian uncharacterized bovine papillomavirus type in the *Xipapillomavirus* genus by sequencing of L1 open reading frame

Table 1 – Sequence and features of polymerase chain reaction primers 46

SUMÁRIO

1 REVISÃO DE LITERATURA	13
2 OBJETIVOS	28
2.1 OBJETIVO GERAL.....	28
2.2 OBJETIVOS ESPECÍFICOS	28
3 ARTIGO PARA PUBLICAÇÃO – PHYLOGENETIC POSITION OF A BRAZILIAN UNCHARACTERIZED BOVINE PAPILLOMAVIRUS TYPE IN THE XIPAPILLOMAVIRUS GENUS BY SEQUENCING OF L1 OPEN READING FRAME	29
Abstract.....	30
Introduction	31
Materials and Methods	32
<i>Papilloma specimen and cell lysis</i>	32
<i>DNA extraction</i>	33
<i>Strategy and primer design</i>	33
<i>PCR parameters</i>	34
<i>Cloning and DNA sequencing</i>	35
<i>Sequence analysis</i>	35
Results	36
Discussion.....	37
References	41
4 CONCLUSÕES	49
APÊNDICES	50
APÊNDICE A – Lista de reagentes.....	51
APÊNDICE B – Soluções e tampões	53
APÊNDICE C – Protocolo de técnicas	55
ANEXOS	60

ANEXO A – Seqüência do gene L1 do isolado BPV/BR-UEL2	61
ANEXO B – Código das bases degeneradas	62
ANEXO C – Normas de publicação do periódico <i>Braz J Med Biol Res</i>	63

1 REVISÃO DE LITERATURA

O papilomavírus (PV - *papillomavirus*) constitui um grupo de vírus DNA altamente diverso, tendo sido identificado em distintas espécies de mamíferos e de aves (De VILLIERS et al., 2004). Além dos seres humanos, os PVs foram encontrados em diversas espécies: caprinos (ChPV-1); ovinos (OvPV-1); cervídeos (DPV - cervos; EEPV - alces); equídeos (EcPV-1); primatas não-humanos (RhPV-1 - macaco rhesus); felinos (FdPV - gato doméstico); sirenios (TmPV-1 - peixe-boi-marinho); cetáceos (PsPV - boto-de-burmeister) e aves (PePV - papagaio africano cinzento) (STENLUND et al., 1983; GROFF; LANCASTER, 1985; OSTROW et al., 1991; TACHEZY et al., 2002; TERAJ; BURK, 2002; GHIM et al., 2004; NARECHANIA et al., 2004; Rector et al., 2004; Van DOORSLAER et al., 2006; Van BRESSEM et al., 2007).

Nos seres humanos, a única espécie hospedeira cuja infecção pelo papilomavírus tem sido bem estudada, cerca de 100 tipos diferentes de papilomavírus (HPV - *human papillomavirus*) foram descritos por meio da determinação da seqüência completa do genoma viral. Porém, dados obtidos a partir de seqüências de produtos subgenômicos têm evidenciado a existência de outros 100 supostos novos tipos virais (BERNARD, 2005).

O PV é um vírus epiteliotrópico com potencial para a indução de lesões benignas tanto na pele (papilomas ou verrugas) quanto em mucosas (condilomas) de seus hospedeiros naturais. Entretanto, também tem sido atribuído a alguns PVs o desenvolvimento de lesões epiteliais malignas, especialmente em casos de câncer do colo uterino e outros tumores do trato urogenital. O reconhecimento de que alguns tipos específicos de HPVs representam importantes patógenos para os seres humanos, uma vez que estão diretamente associados a diferentes tumores, tem justificado sua importância médica e estimulado esforços no desenvolvimento de vacinas contra este vírus (HOWLEY; LOWY, 2001).

A infecção por diversos tipos de papilomavírus bovino (BPV - *bovine papillomavirus*) tem sido relacionada a diferentes quadros clínicos em bovinos. A ocorrência de tumores cutâneos benignos, caracterizando a papilomatose cutânea, pode ser verificada em diversas regiões do corpo do animal. Na dependência da extensão das lesões, há o comprometimento do desenvolvimento corporal dos animais, predisposição a infecções e/ou infestações secundárias, depreciação do couro, entre outras conseqüências que podem acarretar prejuízos econômicos à exploração pecuária de corte e, principalmente, leiteira. Papilomas localizados no úbere e nos tetos de vacas em lactação dificultam a amamentação

dos bezerros, a ordenha tanto manual quanto, principalmente, mecânica e, devido às infecções bacterianas secundárias, predis põem a mastites clínicas e/ou subclínicas ascendentes (CAMPO, 2002).

A interação entre tipos específicos do BPV e a ingestão prolongada da planta samambaia (*Pteridium aquilinum*), tem sido apontada como a etiologia tanto da hematúria enzoótica quanto do câncer do trato gastrointestinal superior em bovinos. No primeiro caso, acredita-se que inicialmente ocorra uma infecção latente pelo BPV-2 na mucosa da bexiga. Posteriormente, a infecção seria reativada e induzida à neoplasia por meio de compostos químicos imunossupressivos e carcinogênicos presentes na samambaia, culminando na progressão à malignidade. Quanto aos tumores do canal alimentar, a imunossupressão causada pela ingestão da samambaia define a persistência dos papilomas, induzidos pelo BPV-4, que por ação de elementos carcinogênicos da planta podem evoluir para carcinomas malignos (CAMPO et al., 1994, 1997; BORZACCHIELLO et al., 2003).

A associação do PV com diversos tipos de tumores em várias espécies de hospedeiros já está bem caracterizada. Contudo, estudos com o objetivo de avaliar a presença do HPV em pele saudável, tanto em grupos de pacientes imunossuprimidos quanto de voluntários imunocompetentes e saudáveis, têm revelado a ocorrência de infecções subclínicas na maioria dos indivíduos de ambos os grupos. A elevada frequência do vírus e a grande multiplicidade de tipos virais demonstrada em pele saudável têm sugerido que o HPV possa estar presente, como um agente comensal, na pele da população em geral (BOXMAN et al., 1997; ASTORI et al., 1998; ANTONSSON et al., 2000).

O PV é espécie-específico e, até mesmo em condições experimentais, não é capaz de infectar outra espécie que não o seu hospedeiro natural. O único caso conhecido de infecção inter-espécies é o sarcóide equino, que é a infecção de equídeos pelos BPV-1 e BPV-2 (CAMPO, 2002).

Devido à não existência de outros casos relatados de quebra da barreira inter-espécies com relação à infecção pelo PV, até o momento, não foi obtido um modelo animal susceptível à infecção pelo HPV. Com isso, alguns modelos experimentais de infecção com PV animal têm sido cruciais na investigação da biologia do vírus, da sua relação com o hospedeiro, da resposta imune contra o vírus e no desenvolvimento das primeiras vacinas contra PV. Esses modelos animais têm balizado os estudos conduzidos com o HPV, tanto no seu envolvimento direto com neoplasias, quanto na relação entre o vírus e co-carcinógenos ambientais, primeiramente estabelecidos com PV animal, particularmente o papilomavírus

dos coelhos-americanos (CRPV - *cottontail rabbit papillomavirus*), o BPV, e o papilomavírus oral canino (COPV - *canine oral papillomavirus*) (CAMPO, 2002).

O PV tem 52 a 55 nm de diâmetro, é desprovido de envelope lipoprotéico, e apresenta simetria icosaédrica. A replicação viral ocorre no núcleo de células epiteliais pavimentosas. O vírion é constituído de uma única molécula de DNA, fita dupla e circular, com aproximadamente 8000 pares de base (pb), contida em um capsídeo composto de 72 capsômeros (CRAWFORD; CRAWFORD, 1963).

A organização genômica dos diversos PVs é muito semelhante. Uma característica compartilhada pelos PVs é o fato de todos os quadros abertos de leitura (ORFs - *open reading frames*) estarem contidos em uma das fitas do DNA viral, indicando que todos os genes são codificados em apenas uma fita. Estudos sobre a transcrição dos RNAs codificados pelos PVs, têm confirmado que somente uma das fitas desempenha a função de molde na transcrição. A fita codificante é constituída por até 10 ORFs que são classificadas, com base em sua localização no genoma viral, em iniciais (E - *early*) e tardias (L - *late*). O segmento inicial do genoma (E) pode ser constituído por até oito ORFs, enquanto o segmento final (L) geralmente contém duas ORFs. Entre estes segmentos existe ainda uma região desprovida de ORFs e denominada LCR (*long control region*), onde estão presentes tanto a origem de replicação quanto diversos promotores (HOWLEY; LOWY, 2001).

A expressão das seis proteínas não-estruturais e regulatórias mais comuns (E1, E2, E4, E5, E6 e E7), codificadas pela região inicial do genoma viral, ocorre em queratinócitos indiferenciados ou em etapas intermediárias de diferenciação. A expressão das duas proteínas estruturais virais (L1 e L2), codificadas pelo segmento final do genoma, ocorre em queratinócitos em fase final de diferenciação (ZHENG; BAKER, 2006).

As proteínas não-estruturais E1 e E2 estão envolvidas na replicação do DNA viral e na regulação do início da transcrição. A E4, que é expressa em infecções produtivas, está associada com o colapso dos filamentos de citoqueratina, enquanto E5, E6 e E7 constituem oncogenes virais, cuja expressão induz a imortalização e a transformação das células infectadas (ZHENG; BAKER, 2006).

O capsídeo viral é constituído pelas duas proteínas estruturais (L1 e L2). A principal proteína do capsídeo (L1) tem aproximadamente 55 kD e representa cerca de 80% da quantidade total de proteína do vírus. Por outro lado, a proteína L2 tem tamanho molecular aproximado de 70 kD (FRAVE et al., 1975). Além disso, sabe-se que partículas semelhantes ao vírus (VLP - *virus-like particles*) podem ser produzidas a partir de diferentes PVs somente pela expressão da L1 ou pela combinação da L1 com a L2, utilizando tanto sistemas de

expressão protéica de mamíferos quanto outros (ROSE et al., 1993; ZHOU et al., 1993). Embora a L2 não seja necessária para o processo de montagem viral, ela é incorporada em VLPs quando co-expressa com a L1. Quando visualizadas por microscopia crioeletrônica, a morfologia das VLPs, contendo somente a L1, parece ser idêntica à das partículas virais intactas (Hagensee et al., 1994). Os epítomos que induzem a produção de anticorpos neutralizantes estão presentes principalmente na L1, sendo também localizados na L2 (RODEN et al., 1994).

Originalmente, o PV foi agrupado juntamente com o poliomavírus para formar a família *Papovaviridae*. Porém, como estes dois grupos de vírus apresentam diferenças no tamanho e na organização genômica, e nenhuma similaridade significativa quanto às seqüências de nucleotídeos e aminoácidos, eles são atualmente reconhecidos pelo Comitê International de Taxonomia Viral como duas famílias distintas, com os PVs constituindo a família *Papillomaviridae* (De VILLIERS et al., 2004).

Diferentemente da taxonomia de outras famílias virais, a introdução formal de níveis taxonômicos tais como "gênero" e "espécie", ocorreu apenas recentemente na família *Papillomaviridae* (De VILLIERS et al., 2004). Assim, como o estabelecido de uma forma geral em biologia, um gênero específico de PV une espécies filogeneticamente relacionadas, mas que, com freqüência, diferem quanto às características biológicas (figura 1). Já uma espécie agrupa tipos de PV que apresentam tanto relação filogenética próxima quanto propriedades biológicas e patológicas comuns. A tradução destas relações taxonômicas para a identidade observada entre seqüências de nucleotídeos ocorre da seguinte forma: i) para os diferentes gêneros a similaridade na ORF L1 é inferior a 60%. Quando a comparação é realizada utilizando seqüências genômicas completas é necessária similaridade superior a 23%, porém inferior a 43%; ii) Similaridades na ORF L1 entre 60 e 70% definem diferentes espécies virais.

Em relação ao termo "tipo", que é tradicionalmente utilizado na descrição de novos isolados de PV, utiliza-se a definição estabelecida no Encontro Internacional de Papilomavírus, realizado em 1995. Como critério preconiza-se que um novo tipo de PV é reconhecido quando o seu genoma completo for clonado e a seqüência de nucleotídeos da ORF L1 diferir em mais de 10% do tipo de PV mais próximo a ele e já anteriormente descrito. A ocorrência de diferenças, na mesma ORF, entre 2 e 10% definem um subtipo, enquanto as diferenças menores de 2% caracterizam uma variante viral (De VILLIERS et al., 2004). Quando a descrição de um novo isolado de PV é realizada por meio de uma seqüência parcial

da ORF L1, ele é definido como "provável novo tipo viral" (ANTONSSON et al., 2003; OGAWA et al., 2004).

Devido à inexistência de sistemas convencionais de cultivo celular para a manutenção dos PVs e também pela extensa reatividade sorológica entre eles, a identificação dos tipos virais envolvidos nos diversos quadros clínicos tem sido realizada por meio de técnicas que identificam o DNA viral (LOWY; HOWLEY, 2001). Considerando a grande correlação entre os HPVs e distintos tumores em humanos, o interesse por uma identificação adequada dos tipos virais tem aumentado consideravelmente.

Desde a constatação da ocorrência de grande diversidade nos HPVs, a reação em cadeia pela polimerase (PCR - *polymerase chain reaction*) tem sido apontada como o método de escolha para a identificação do DNA de PV em espécimes clínicos. Como a L1 é a proteína mais conservada entre os PVs, oligonucleotídeos iniciadores (*primers*) direcionados para o gene L1 tem sido utilizados, com frequência, para a detecção de HPVs (GRAVITT; MANOS, 1992).

Em humanos, técnicas de PCR utilizando *primers* consensuais e genéricos, que apresentam alta identidade de nucleotídeos com seqüências conservadas das ORFs E1 e, principalmente, L1, têm sido desenvolvidas. Esses sistemas de PCR têm sido rotineiramente utilizados para detectar uma grande variedade de tipos de HPV em amostras clínicas provenientes de pele ou mucosas (MANOS et al., 1989; FORSLUND et al., 1999). Tanto o seqüenciamento direto dos produtos da PCR quanto a clonagem e posterior seqüenciamento constituem metodologias comumente utilizadas na genotipagem dos HPVs presentes em espécimes clínicos. Esta estratégia tem se mostrado promissora na obtenção de seqüências de tipos de HPV ainda não caracterizados, assim como na identificação de mutações entre os tipos já conhecidos (FORSLUND et al., 1999; CHOW et al., 2000; HUANG et al., 2004).

Atualmente, dois diferentes sistemas de PCR, que envolvem o uso de *primers* genéricos inicialmente desenhados para a amplificação do HPV, têm sido aplicados em estudos que abordam a diversidade do BPV. O primeiro deles, empregando o par de *primers* MY09/MY11, foi originalmente desenvolvido para detectar alguns tipos específicos de HPV relacionados com infecções em mucosas. Porém, esse sistema também tem possibilitado a amplificação da extremidade 3' do gene L1 da maioria dos HPVs genitais (MANOS et al., 1989; BERNARD et al., 1994). O outro sistema, que emprega o par de *primers* FAP59/FAP64, foi primeiramente delineado para amplificar um fragmento na extremidade 5' da ORF L1 de tipos de HPV cutâneos. Contudo, esse sistema também permitiu

a detecção de um grande número de tipos de HPV, tanto cutâneos quanto genitais (FORSLUND et al., 1999; ANTONSSON et al., 2000, 2003).

Enquanto centenas de tipos de HPVs já foram definidos, até o início da década de 1980 apenas seis tipos de BPV (BPV-1 a BPV-6) tinham sido identificados a partir de casos de papilomatose cutânea e câncer em bovinos (PFISTER et al., 1979; CAMPO et al., 1980, 1981; CAMPO; COGGINS, 1982; CHEN et al., 1982; JARRETT et al., 1984).

Entretanto, estudos realizados a partir do início da década atual, com o objetivo de investigar a real diversidade do BPV, têm indicado a existência de numerosos tipos de BPV, a exemplo do que ocorre nos seres humanos. O primeiro trabalho realizado envolveu o emprego dos *primers* genéricos FAP em amostras (*swabs*) provenientes de pele saudável de animais pertencentes a 19 espécies de vertebrados. Dentre os dez bovinos analisados, e que não apresentavam qualquer sinal clínico compatível com a infecção pelo BPV, em seis foram detectados um ou dois prováveis novos tipos de BPV. Estes prováveis novos tipos virais foram denominados BAA-1 a BAA-5 (ANTONSSON; HANSSON, 2002).

Posteriormente, visando à determinação da prevalência do BPV em papilomas e pele saudável de tetos, um estudo que envolveu a utilização dos *primers* FAP59/FAP64 e MY09/MY11, analisou 15 papilomas de teto e 122 *swabs* de pele saudável de animais, provenientes de cinco municípios do Japão. Quatro tipos previamente caracterizados de BPV (BPV-1, -3, -5 e -6), dois prováveis novos tipos de BPV anteriormente identificados (BAA-1 e -5) e 11 prováveis novos tipos (designados BAPV-1 a -10 e BAPV-11MY) foram encontrados nas 39 amostras positivas para o BPV. Porém, os prováveis novos tipos BAA-1 e BAPV-7 a -10 foram somente detectados a partir de amostras obtidas de pele saudável (OGAWA et al., 2004). Adicionalmente, em um surto de papilomatose mamária (tetos), ocorrido no Japão em um rebanho constituído por 560 novilhas, foi confirmada a presença do BPV-6 na maioria das 14 amostras analisadas. Nessa amostragem também foram identificados os prováveis novos tipos BAA-5 e BAPV-1, anteriormente descritos (MAEDA et al., 2007).

Recentemente, a realização de análises complementares de alguns prováveis novos tipos de BPV, por meio da determinação da seqüência completa do genoma viral, permitiu a caracterização de novos tipos virais. O primeiro novo tipo caracterizado foi o BPV-7, inicialmente denominado BAPV-6. Como a seqüência de nucleotídeos da ORF L1 do BPV-7 foi mais relacionada àquela de PVs membros dos gêneros *Betapapillomavirus*, *Gamapapillomavirus* e *Pipapillomavirus*, os quais contêm representantes responsáveis por

lesões cutâneas em humanos e em mucosa de hamsters, este novo tipo de BPV, provavelmente, constituirá um novo gênero ainda não nominado (OGAWA et al., 2007).

O segundo tipo de BPV recentemente descrito foi o BPV-8, anteriormente designado como BAPV-2 e identificado no Japão. A definição deste novo tipo viral foi realizada juntamente com a descrição da sua variante denominada BPV-8-EB, proveniente de um caso de papilomatose cutânea em um bisão europeu nascido na Itália. A alta similaridade observada entre as seqüências da ORF L1 do BPV-8 e do BPV-5 (75%), assim como a análise filogenética, constituíram a base para a classificação deste novo tipo viral no gênero *Epsilonpapillomavirus*. Adicionalmente, a estrutura genômica das regiões inicial e tardia destes dois diferentes membros do gênero se mostrou quase idêntica, diferindo apenas na ORF E4, que está presente no BPV-8 e ausente no BPV-5 (TOMITA et al., 2007).

Os dois tipos de BPV descritos mais recentemente, identificados a partir de papilomas de tetos, foram o BPV-9 e o BPV-10, inicialmente denominados prováveis novos tipos BAPV-1 e BAA-5. A análise filogenética e a constatação da maior similaridade na ORF L1 com o BPV-3 (74,2 e 71,2%, respectivamente) classificaram os dois novos isolados no gênero *Xipapillomavirus* (HATAMA et al., 2008).

No Brasil, a associação entre a infecção pelo BPV e a ocorrência de papilomatose cutânea, hematúria enzoótica e neoplasias do trato digestório superior, tem sido confirmada em bovinos. Estudos anteriormente realizados, empregando *primers* específicos para um único tipo viral, demonstraram a presença do BPV-1 em lesões cutâneas, sangue total e plasma sanguíneo de animais adultos com papilomatose cutânea, e em placenta e líquido amniótico provenientes de uma vaca apresentando o mesmo quadro clínico. O BPV-2 foi identificado em sangue periférico e bexiga urinária de animais com hematúria enzoótica, e em amostras de papilomas e do trato reprodutivo feminino de bovinos (SANTOS et al. 1998; FREITAS et al., 2003; CARVALHO et al., 2003; WOSIACKI et al., 2005, 2006).

Apesar da papilomatose cutânea representar um problema sanitário considerável, tanto para rebanhos bovinos de corte quanto, principalmente, leiteiros, a realização de estudos visando à identificação dos tipos de BPV envolvidos na determinação de lesões cutâneas em bovinos no Brasil ainda é esporádica. Recentemente, a detecção do BPV-1, -2, -6 e -8 em papilomas provenientes de rebanhos bovinos do Estado do Paraná foi possível por meio da utilização dos *primers* genéricos FAP (CLAUS et al., 2007; 2008a, *inpress*). Em outro estudo, a identificação de quatro prováveis novos tipos de BPV, denominados BPV/BR-UDEL2 a -5, ainda não descritos no mundo, aponta para a ocorrência de

considerável diversidade viral nos rebanhos bovinos brasileiros (CLAUS et al., 2008b, *in press*).

Atualmente, tem-se grande expectativa de que o delineamento de estudos mais abrangentes e focados na epidemiologia molecular das infecções pelo BPV possam evidenciar a ocorrência de grande diversidade viral, assim como ocorre em HPV. Com a ratificação dessa hipótese, será possível afirmar que os numerosos tipos de BPV passaram indetectáveis ao longo dos anos não devido à inexistência de variabilidade viral, mas sim porque técnicas inadequadas, inclusive de biologia molecular, levaram a sua não detecção.

Como a imunidade humoral e a celular induzida pelo BPV é tipo-específica, a definição dos tipos virais envolvidos em lesões neoplásicas em bovinos não tem apenas interesse epidemiológico. Com a definição dos tipos de BPV mais frequentes em quadros clínicos que, devido à sua frequência de ocorrência, ocasionam prejuízos econômicos à exploração pecuária, será possível definir os tipos virais que poderiam representar alvos para o desenvolvimento de vacinas tipo-específicas.

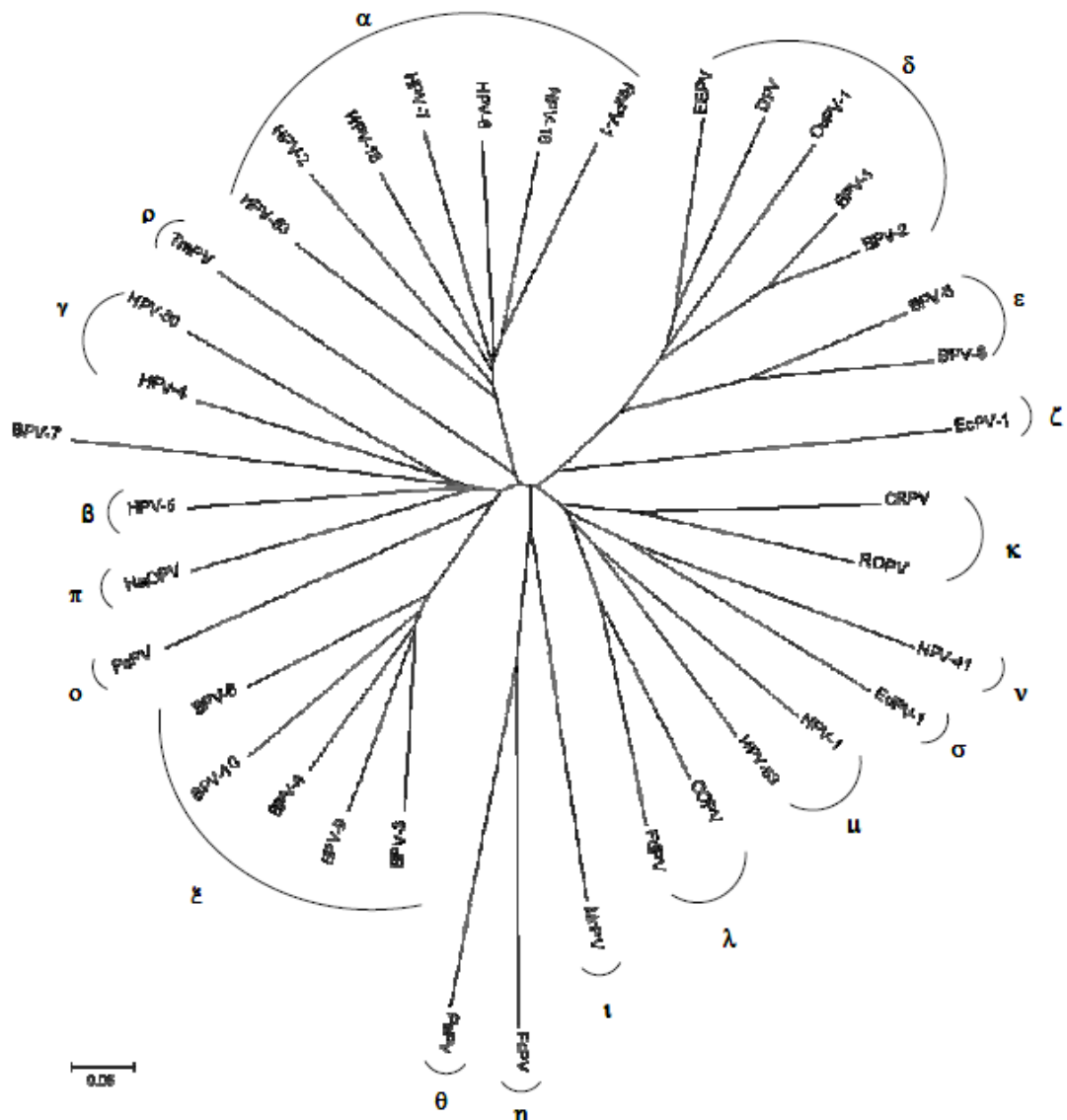


Figura 1 – Reconstrução filogenética baseada em seqüências completas do gene L1 de 39 papilomavírus humanos e animais, classificados nos gêneros *Alphapapillomavirus* ao *Sigmampapillomavirus*.

REFERENCIAS

ANTONSSON, A.; FORSLUND, O.; EKBERG, H.; STERNER, G.; HANSSON B.G. The ubiquity and impressive genomic diversity of human skin papillomaviruses suggest a commensalic nature of these viruses. *Journal of Virology*, v.74, p. 11636-11641, 2000.

ANTONSSON, A.; HANSSON, B.G. Healthy skin of many animal species harbors papillomaviruses which are closely related to their human counterparts. *Journal of Virology*, v.76, p.12537-12542, 2002.

ANTONSSON, A.; ERFURT, C.; HAZARD, K.; HOLMGREN, V.; SIMON, M.; KATAOKA, A.; HOSSAIN, S.; HAKANGARD, C.; HANSSON, B.G. Prevalence and type spectrum of human papillomaviruses in healthy skin samples collected in three continents. *Journal of General Virology*, v.84, p.1881-1886, 2003.

ASTORI, G.; LAVERGNE, D.; BENTON, C.; HOCKMAYR, B.; EGAWA, K.; GARBE, C.; DE VILLIERS, E.M. Human papillomaviruses are commonly found in normal skin of immunocompetent hosts. *The Journal of Investigative Dermatology*, v.110, p.752-755, 1998.

BERNARD, H.U.; CHAN, S.Y.; MANOS, M.M.; ONG, C.K.; VILLA, L.L.; DELIUS, H.; PEYTON, C.L.; BAUER, H.M.; WHEELER, C.M. Identification and assessment of known and novel human papillomaviruses by polymerase chain reaction amplification, restriction fragment length polymorphisms, nucleotide sequence, and phylogenetic algorithms. *The Journal of Infectious Diseases*, v.170, p.1077-1085, 1994.

BERNARD, H.U. The clinical importance of the nomenclature, evolution and taxonomy of human papillomaviruses. *Journal of Clinical Virology*, v.32, p.1-6, 2005.

BORZACCHIELLO, G.; AMBROSIO, V.; ROPERTO, S.; POGGIALI, F.; TSIRIMONAKIS, E.; VENUTI, A.; CAMPO, M.S.; ROPERTO, F. Bovine papillomavirus type 4 in oesophageal papillomas of cattle from the south of Italy. *Journal of Comparative Pathology*, v.128, p.203-206, 2003.

BOXMAN, I.L.; BERKHOUT, R.J.; MULDER, L.H.; WOLKERS, M.C.; BOUWES BAVINCK, J.N.; VERMEER, B.J.; TER SCHEGGET, J. Detection of human papillomavirus DNA in plucked hairs from renal transplant recipients and healthy volunteers. *The Journal of Investigative Dermatology*, v.108, p.712-715, 1997.

CAMPO, M.S.; MOAR, M.H.; JARRETT, W.F.H.; LAIRD, H.M. A new papillomavirus associated with alimentary cancer in cattle. *Nature*, v.286, p.180-182, 1980.

CAMPO, M.S.; MOAR, M.H.; LAIRD, H.M.; JARRETT, W.F.H. Molecular heterogeneity and lesion site specificity of cutaneous bovine papillomaviruses. *Virology*, v.113, p.323-335, 1981.

CAMPO, M.S.; COGGINS, L.W. Molecular cloning of bovine papillomavirus genomes and comparison of their sequence homologies by heteroduplex mapping. *Journal of General Virology*, v.63, p.255-264, 1982.

CAMPO, M.S.; O'NEIL, B.W.; BARRON, R.J.; JARRETT, W.F. Experimental reproduction of the papilloma-carcinoma complex of the alimentary canal in cattle. *Carcinogenesis*, v.15, p.1597-1601, 1994.

CAMPO, M.S. Bovine papillomavirus and cancer. *Veterinary Journal*, v.154, p. 175-188, 1997.

CAMPO, M.S. Animal models of papillomavirus pathogenesis. *Virus Research*, v.89, p.249-261, 2002.

CHEN, E.Y.; HOWLEY, P.M.; LEVINSON, A.D.; SEEBURG, P.H. The primary structure and genetic organization of the bovine papillomavirus type 1 genome. *Nature*, v.299, p.529-534, 1982.

CHOW, V.T.; LOH, E.; YEO, W.M.; TAN, S.Y.; CHAN, R. Identification of multiple genital HPV types and sequence variants by consensus and nested type-specific PCR coupled with cycle sequencing. *Pathology*, v.32, p.204-208, 2000.

CLAUS, M.P.; VIVIAN, D.; LUNARDI, M.; ALFIERI, A.F.; ALFIERI, A.A. Phylogenetic analysis of bovine papillomavirus associated with skin warts in cattle herds from the state of Paraná. *Pesquisa Veterinária Brasileira*, v.27, p.314-318, 2007.

CLAUS, M.P.; LUNARDI, M.; ALFIERI, A.F.; FERRACIN, L.M.; FUNGARO, M.H.P.; ALFIERI, A.A. Identification of unreported putative new bovine papillomavirus types in Brazilian cattle herds. *Veterinary Microbiology*, 2008a, *in press*.

CLAUS, M.P.; LUNARDI, M.; ALFIERI, A.F.; SARTORI, D.; FUNGARO, M.H.P.; ALFIERI, A.A. Identification of the recently described new type of bovine papillomavirus (BPV-8) in Brazilian beef cattle herd. *Pesquisa Veterinária Brasileira*, 2008b, *in press*.

CRAWFORD, L.V.; CRAWFORD, E.M. A comparative study of polyoma and papilloma viruses. *Virology*, v.21, p.258-263, 1963.

DE CARVALHO, C.; DE FREITAS, A.C.; BRUNNER, O.; GÓES, L.G.B.; CAVALCANTE, A.Y.; BEÇAK, W.; DOS SANTOS, R.C.S. Bovine papillomavirus type 2 in reproductive tract and gametes of slaughtered bovine females. *Brazilian Journal of Microbiology*, v.34, p.82-84, 2003.

DE FREITAS, A.C.; DE CARVALHO, C.; BRUNNER, O.; BIRGEL-JUNIOR, E.H.; DELLALIBERA, A.M.M.P.; BENESI, F.J.; GREGORY, L.; BEÇAK W.; DOS SANTOS, R.C.S. Viral DNA sequences in peripheral blood and vertical transmission of the virus: a discussion about BPV-1. *Brazilian Journal of Microbiology*, v.34, p.76-78, 2003.

DE VILLIERS, E.M.; FAUQUET, C.; BROKER, T.R.; BERNARD, H.U.; ZUR HAUSEN, H. Classification of papillomaviruses. *Virology*, v.324, p.17-27, 2004.

DOS SANTOS, R.C.S.; LINDSEY, C.J.; FERRAZ, O.P.; PINTO, JR.; MIRANDOLA, R.S.; BENESI, F.J.; BIRGEL, E.H.; PEREIRA, C.A.B.; BEÇAK, W. Bovine papillomavirus transmission and chromosomal aberrations: an experimental model. *Journal of General Virology*, v.79, p.2127-2135, 1998.

FAVRE, M. Structural polypeptides of rabbit, bovine, and human papillomaviruses. *Journal of Virology*, v.15, p.1239-1247, 1975.

FORSLUND, O.; ANTONSSON, A.; NORDIN, P.; STENQUIST, B.; HANSSON, B.G. A broad range of human papillomavirus types detected with a general PCR method suitable for analysis of cutaneous tumours and normal skin. *Journal of General Virology*, v. 80, p.2437-2443, 1999.

GHIM, S.J.; RECTOR, A.; DELIUS, H.; SUNDBERG, J.P.; JENSON, A.B.; VAN RANST, M. Equine papillomavirus type 1: complete nucleotide sequence and characterization of recombinant virus-like particles composed of the EcPV-1 L1 major capsid protein. *Biochemical and Biophysical Research Communications*, v.324, p. 1108-1115, 2004.

GRAVITT, P.E.; MANOS, M.M. Polymerase chain reaction-based methods for the detection of human papillomavirus DNA. *IARC Scientific Publications*, v.119, p. 121-133, 1992.

GROFF, D.E.; LANCASTER, W.D. Molecular cloning and nucleotide sequence of deer papillomavirus. *Journal of Virology*, v.56, p.85-91, 1985.

HAGENSEE, M.E.; OLSON, N.H.; BAKER, T.S.; GALLOWAY, D.A. Three-dimensional structure of vaccinia virus-produced human papillomavirus type 1 capsids. *Journal of Virology*, v.68, p.4503-4505, 1994.

HATAMA, S.; NOBUMOTO, K.; KANNO, T. Genomic and phylogenetic analysis of two novel bovine papillomaviruses, BPV-9 and BPV-10. *Journal of General Virology*, v.89, p.158-163, 2008.

HOWLEY, P.M.; LOWY, D.R. Papillomaviruses and their replication. In: Knipe, D.M., Howley, P.M. (Eds.), *Fields' Virology*, Lippincott Williams and Wilkins, Philadelphia, cap. 65, p.2197-2229, 2001.

HUANG, L.W.; CHAO, S.L.; CHEN, P.H.; CHOU, H.P. Multiple HPV genotypes in cervical carcinomas: improved DNA detection and typing in archival tissues. *Journal of Clinical Virology*, v.29, p.271-276, 2004.

JARRETT, W.F.H.; CAMPO, M.S.; O'NEIL, B.W.; LAIRD, H.M.; COGGINS, L.W. A novel bovine papillomavirus (BPV-6) causing true epithelial papillomas of the mammary gland skin: a member of a proposed new BPV subgroup. *Virology*, v.136, p.255-264, 1984.

LOWY, D.R.; HOWLEY, P.M. Papillomaviruses. In: Knipe, D.M., Howley, P.M. (Eds.), *Fields' Virology*, Lippincott Williams and Wilkins, Philadelphia, cap. 66, p.2231-2264, 2001.

MAEDA, Y.; SHIBAHARA, T.; WADA, Y.; KADOTA, K.; KANNO, T.; UCHIDA, I.; HATAMA, S. An outbreak of teat papillomatosis in cattle caused by bovine papilloma virus (BPV) type 6 and unclassified BPVs. *Veterinary Microbiology*, v.121, n.3-4, p.242-248, 2007.

MANOS, M.M.; TING, Y.; WRIGHT, D.K.; LEWIS, A.J.; BROKER, T.R.; WOLINKY, S.M. The use of polymerase chain reaction amplification for the detection of genital human papillomaviruses. *Cancer Cell*, v.7, p.209-214, 1989.

NARECHANIA, A.; TERAJ, M.; CHEN, Z.; DESALLE, R.; BURK, R.D. Lack of the canonical pRB-binding domain in the E7 ORF of artiodactyl papillomaviruses is associated with the development of fibropapillomas. *Journal of General Virology*, v.85, p.1243-1250, 2004.

OGAWA, T.; TOMITA, Y.; OKADA, M.; SHINOZAKI, K.; KUBONOYA, H.; KAIHO, I.; SHIRASAWA, H. Broad-spectrum detection of papillomaviruses in bovine teat papillomas and healthy teat skin. *Journal of General Virology*, v.85, n.8, p.2191-2197, 2004.

OGAWA, T.; TOMITA, Y.; OKADA, M.; SHIRASAWA, H. Complete genome and phylogenetic position of bovine papillomavirus type 7. *Journal of General Virology*, v.88, n.7, p.1934-1938, 2007.

OSTROW, R.S.; LABRESH, K.V.; FARÁS, A.J. Characterization of the complete RhPV 1 genomic sequence and an integration locus from a metastatic tumor. *Virology*, v. 181, p.424-429, 1991.

PFISTER, H.; LINZ, U.; GISSMANN, L.; HUCHTHAUSEN, B.; HOFFMAN, D.; ZUR HAUSEN, H. Partial characterization of a new type of bovine papillomavirus. *Virology*, v.96, p.1-8, 1979.

RECTOR, A.; BOSSART, G.D.; GHIM, S.J.; SUNDBERG, J.P.; JENSON, A.B.; VAN RANST, M. Characterization of a novel close-to-root papillomavirus from a Florida manatee by using multiply primed rolling-circle amplification: *Trichechus manatus latirostris* papillomavirus type 1. *Journal of Virology*, v.78, p.12698-12702, 2004.

RODEN, R.B.; WEISSINGER, E.M.; HENDERSON, D.W.; BOOY, F.; KIRNBAUER, R.; MUSHINSKI, J.F.; LOWY, D.R.; SCHILLER, J.T. Neutralization of bovine papillomavirus by antibodies to L1 and L2 capsid proteins. *Journal of Virology*, v.68, p.7570-7574, 1994.

ROSE, R.C.; BONNEZ, W.; REICHMAN, R.C.; GARCEA, R.L. Expression of human papillomavirus type 11 L1 protein in insect cells: in vivo and in vitro assembly of viruslike particles. *Journal of Virology*, v.67, p.1936-1944, 1993.

STENLUND, A.; MORENO-LOPEZ, J.; AHOLA, H.; PETTERSSON, U. European elk papillomavirus: characterization of the genome, induction of tumors in animals, and transformation in vitro. *Journal of Virology*, v.48, p.370-376, 1983.

TACHEZY, R.; RECTOR, A.; HAVELKOVA, M.; WOLLANTS, E.; FITEN, P.; OPDENAKKER, G.; JENSON, B.; SUNDBERG, J.; VAN RANST, M. Avian papillomaviruses: the parrot *Psittacus erithacus* papillomavirus (PePV) genome has a unique organization of the early protein region and is phylogenetically related to the chaffinch papillomavirus. *BMC Microbiology*, v.10, p.2-19, 2002.

TERAI, M.; BURK, R.D. *Felis domesticus* papillomavirus, isolated from a skin lesion, is related to canine oral papillomavirus and contains a 1.3 kb non-coding region between the E2 and L2 open reading frames. *Journal of General Virology*, v.83, p.2303-2307, 2002.

TOMITA, Y.; LITERAK, I.; OGAWA, T.; JIN, Z.; SHIRASAWA, H. Complete genomes and phylogenetic positions of bovine papillomavirus type 8 and a variant type from a European bison. *Virus Genes*, v.35, p.243-249, 2007.

VAN BRESSEM, M.F.; CASSONNET, P.; RECTOR, A.; DESAINTE, C.; VAN WAEREBEEK, K.; ALFARO-SHIGUETO, J.; VAN RANST, M.; ORTH, G. Genital warts in Burmeister's porpoises: characterization of Phocoena spinipinnis papillomavirus type 1 (PsPV-1) and evidence for a second, distantly related PsPV. *Journal of General Virology*, v.88, p.1928-1933, 2007.

VAN DOORSLAER, K.; RECTOR, A.; VOS, P.; VAN RANST, M. Genetic characterization of the *Capra hircus* papillomavirus: a novel close-to-root artiodactyl papillomavirus. *Virus Research*, v.118, p.164-169, 2006.

WOSIACKI, S.R.; BARREIROS, M.A.B.; ALFIERI, A.F.; ALFIERI, A.A. Semi-Nested-PCR for detection and typing of bovine papillomavirus type 2 in urinary bladder and whole blood from cattle with enzootic haematuria. *Journal of Virological Methods*, v.126, n.1-2, p.215-219, 2005.

WOSIACKI, S.R.; CLAUS, M.P.; ALFIERI, A.F.; ALFIERI, A.A. Bovine papillomavirus type 2 detection in the urinary bladder of cattle with chronic enzootic haematuria. *Memórias do Instituto Oswaldo Cruz*, v. 101, p.635-638, 2006.

ZHENG, Z.M.; BAKER, C.C. Papillomavirus genome structure, expression, and post-transcriptional regulation. *Frontiers in Bioscience*, v.11, p.2286-2302, 2006.

ZHOU, J.; STENZEL, D.J.; SUN, X.Y.; FRAZER, I.H. Synthesis and assembly of infectious bovine papillomavirus particles in vitro. *Journal of General Virology*, v.74, p.763-768, 1993.

2 OBJETIVOS

2.1 OBJETIVO GERAL

- Determinar o posicionamento filogenético (gênero) de um provável novo tipo de BPV (BPV/BR-UEL2) por meio da caracterização molecular da ORF L1.

2.2 OBJETIVOS ESPECÍFICOS

- Desenvolver e avaliar uma PCR com a utilização de *primers* genéricos desenhados a partir de seqüências dos genes L2, L1 e da região LCR de tipos de BPV pertencentes ao gênero *Xipapillomavirus* (BPV-3, -4 e -6);
 - Clonar os *amplicons* obtidos na PCR e seqüenciar os plasmídeos extraídos dos clones gerados;
 - Obter uma seqüência consensual representativa da ORF L1 da amostra BPV/BR-UEL2;
 - Determinar o percentual de similaridade da ORF L1 do provável novo tipo viral BPV/BR-UEL2 com aquelas referentes aos 10 tipos de BPV disponíveis em bases públicas de dados;

3 ARTIGO PARA PUBLICAÇÃO

**PHYLOGENETIC POSITION OF A BRAZILIAN UNCHARACTERIZED BOVINE
PAPILLOMAVIRUS TYPE IN THE *XIPAPILLOMAVIRUS* GENUS BY
SEQUENCING OF L1 OPEN READING FRAME**

Artigo editado de acordo com as normas de publicação do periódico

Brazilian Journal of Medical and Biological Research

Phylogenetic position of a Brazilian uncharacterized bovine papillomavirus type in the *Xipapillomavirus* genus by sequencing of L1 open reading frame

Abstract

In Brazil, despite the endemic characteristic of BPV infections, the identification of BPV types in cattle is still sporadic. However, in a recent investigation, through the analysis of a partial segment of L1 gene, we could verify a notable diversity among the BPV types detected in papilloma specimens from four cattle herds. The aim of the current study is to state the phylogenetic position of a previously identified putative new BPV type (BPV/BR-UEL2) detected in Parana state, Brazil. The BPV/BR-UEL2 was isolated from a papilloma located in the axillary region of a dairy cow. As the previous FAP sequence analysis had revealed our isolate as closest related to BPV type 4, alignments of L1, L2, LCR genomic regions of some *Xipapillomavirus* representatives (BPV-3, -4, and -6) were used in design of degenerate primers. In addition, the previously described FAP primer pair was also employed in both the original form as in combination with the designed primers. The three overlapping amplicons obtained from the L1 ORF, with 435, 475, and 1128 bp, were submitted to cloning and then sequenced. Phylogenetic analysis with complete L1 ORF sequences revealed the BPV/BR-UEL2 isolate as related with BPV types held in *Xipapillomavirus* genus, displaying the highest L1 nucleotide sequence similarity with BPV type 4 (78%), what suggests its classification in the *Xipapillomavirus* genus.

Keywords: Bovine. Cutaneous papillomatosis. Bovine papillomavirus. Putative new BPV type. L1 gene. Phylogenetic analysis.

Introduction

Papillomaviruses (PVs) are a highly diverse group of circular double-stranded DNA viruses that can induce epithelial proliferations in a wide range of vertebrate species. In cattle, the bovine papillomavirus (BPV) has been implied as the casual agent of cutaneous papillomatosis, and cancer of urinary bladder and upper gastrointestinal tract (Campo, 2002).

PVs have a similar genomic organization, with all viral genes located on one DNA strand. The coding strand can present up to ten open reading frames (ORFs) that are classified as either early (E) or late (L) ORFs, according to their position in the genome. The early region of genome is constituted by up to eight ORFs, which encodes the viral regulatory proteins. The late region usually encodes two viral structural proteins (L1 and L2), which give rise to the viral capsid. Additionally, there is a non-coding region in genome which has been designated as long control region (LCR) (Howley and Lowy, 2001).

Recently, based on comparison of entire L1 nucleotide sequence of almost all known PVs, it was defined that the family *Papillomaviridae* is formed by 18 genera (*Alphapapillomavirus* to *Sigmapapillomavirus*), being each one composed of a varied number of species. Besides, it was established that different genera display less than 60% identity in the L1 nucleotide sequence, while diverse species within a genus share between 60 and 70% identity. However, the traditional types within a species present between 71 and 89% identity in the same gene (De Villiers et al., 2004).

While more than a hundred of human papillomavirus (HPV) types have been characterized, there were only six BPV types described in cattle before 2007 (Pfister et al., 1979; Campo et al., 1980, 1981; Campo and Coggins, 1982; Chen et al., 1982; Jarrett et al., 1984). These BPVs were classified in the *Deltapapillomavirus* (BPV-1 and -2), *Xipapillomavirus* (BPV-3, -4, and -6), and *Epsilonpapillomavirus* (BPV-5) genera (De Villiers et al., 2004). In addition, the most recently characterized BPV types were held in

Epsilonpapillomavirus (BPV-8) and *Xipapillomavirus* (BPV-9 and -10), with the exception of BPV-7 which was known to belong to a yet unassigned PV genus (Tomita et al., 2007; Ogawa et al., 2007; Hatama et al., 2008).

As observed in HPV, the use of PCR assay with degenerate primers, which amplify partial fragments of L1 gene, followed by sequencing, have demonstrated the occurrence of numerous BPV types throughout cattle herds worldwide. By using the FAP59/FAP64 and MY09/MY11 primers, it was possible the detection of twelve putative new BPV types in both teat skin warts and healthy teat skin of cattle from Japan and Sweden (Manos et al., 1989; Forslund et al., 1999; Antonsson and Hansson, 2002; Ogawa et al., 2004; Maeda et al., 2007).

In Brazil, a recent investigation employing the same methodology has revealed a notable diversity among the BPV types detected in papillomas of four different cattle herds from Paraná state. Moreover, this study has demonstrated the identification of four putative new BPV types, denominated as BPV/BR-UEL2 to 5 (GenBank Accession Nos. EU293538 to EU293541, respectively) (Claus et al., 2008a, *in press*).

The aim of the current study is to state the phylogenetic position of a previously identified putative new BPV type (BPV/BR-UEL2) detected in Brazil.

Materials and Methods

Papilloma specimen and cell lysis

The BPV/BR-UEL2 DNA was isolated from a rice-grain papilloma located in the axillary region of a cow belonging to a dairy cattle herd from the Parana state, the southern region of Brazil (Claus et al., 2008a, *in press*). The papilloma specimen was taken by hand (wearing gloves) and a fragment was triturated in phosphate buffered saline (PBS pH 7.2). The suspension (10% w/v) was centrifuged for 15 min at 1500 x g at 4°C. An aliquot (250 µL) of the supernatant was treated with lysis buffer [10mM Tris; 1mM EDTA; 0.5% Nonidet

P40; 1% SDS; and 0.2 mg/mL proteinase K (Invitrogen, Life Technologies, USA)]. After homogenization, the sample was incubated at 56°C for 30 min.

DNA extraction

For DNA extraction, a combination of phenol/chloroform/isoamyl alcohol and silica/guanidine isothiocyanate methods was performed (Alfieri et al., 2006). Briefly, the supernatant was treated with an equal volume (500 µL) of phenol/chloroform/isoamyl alcohol (25:24:1), homogenized and heated at 56°C for 15 min (Sambrook and Russell, 2001). After centrifugation at 10,000 x g for 10 min, the aqueous phase was mixed with silica/guanidine isothiocyanate (Boom et al., 1990). The DNA was eluted in 50 µL of ultrapure (MilliQ®) sterile water and kept at -20°C until use. An aliquot of ultrapure sterile water was included as negative control in the DNA extraction procedure.

Strategy and primer design

To achieve the entire L1 nucleotide sequence of the BPV/BR-UEL2 isolate, the following strategy was used. As the previous FAP sequence analysis of 475 nt (GenBank Accession No. EU293538) had revealed the BPV/BR-UEL2 isolate as closest (77%) related to BPV type 4, alignments of amino acid sequences from L2, and nucleotide sequences from L1 and LCR regions of some *Xipapillomavirus* representatives (BPV-3, -4, and -6), were used in design of degenerate primers.

Aiming for amplification of the upstream region of L1 ORF, which includes the start codon, a first primer set was designed. The forward primer (L2Bf) was obtained from a terminal conserved region of L2 sequence, and the reverse (L1Br) from the FAP amplicon sequence previously determined for the BPV/BR-UEL2.

To reach the following segment, which comprises almost the entirety of the first half of L1 gene, the previously described FAP primer pair was employed (Forslund et al., 1999).

A third primer pair was designed to amplify the terminal half of L1 ORF. The forward primer (L1Bf) was also obtained from FAP amplicon sequence of our isolate. However, the reverse primer (LCRBr) was reached from a relatively conserved upstream region verified in LCR sequences of BPV types 3, 4, and 6.

When the designed primer pairs were not able to amplify the desired segments, combinations between them and the FAP primer pair were evaluated (see table 1 for primers features). In addition, the same primer sets were also evaluated on DNA samples previously known to presence of *Xipapillomavirus* representative BPV type 6.

For alignment of sequences and primer design, the CLUSTAL W Multiple Alignment program and Gene Runner version 3.05 program (Hastings Software Inc., Hastings, NY), were respectively used (Thompson et al., 1994).

PCR parameters

The PCR reactions contained 2.5 μ L of DNA sample, 0.5 μ L (20 pmol) of each primer, 200 μ M of each dNTP, 2.5 U of *Platinum Taq* DNA polymerase (Invitrogen Life Technologies, USA), 1x PCR buffer (20 mM Tris-HCl pH 8.4 and 50 mM KCl), 1.5 mM of magnesium chloride and ultrapure sterile water to a final volume of 25 μ L. PCR reactions were carried out in a thermocycler PTC-200 (MJ Research Co., USA), using the following time and temperature conditions: 10 min at 94°C, and then 40 cycles of 1 min at 94°C, 1 min at an optimum temperature for annealing, 1 min at 72°C, and a final extension of 10 min at 72°C. The annealing temperatures for primer pairs L2Bf/FAP64, L2Bf/L1Br, and L1Bf/LCRBr, were 50, 54 and 57°C, respectively.

The amplified products were analyzed by electrophoresis in 2% agarose gel in TBE buffer pH 8.4 (89 mM of Tris; 89 mM of boric acid; 2 mM of EDTA) at constant voltage (90V) for approximately 45 min, stained with ethidium bromide (0.5 µg/mL), and visualized under UV light.

Cloning and DNA sequencing

Initially, all PCR products were purified using PureLink Quick Gel Extraction Kit (Invitrogen, Life Technologies, USA), and then the cloning using the TOPO TA Cloning kit for Sequencing (Invitrogen, Life Technologies, USA) was carried out according to the manufacturer's instructions.

After that, the sequencing of plasmid DNA from two selected clones, for each PCR amplicon, was performed by using the DYEnamic ET dye terminator cycle sequencing kit (Amersham Biosciences, UK) with M13 forward and reverse primers, in a MegaBACE 1000/Automated 96 Capillary DNA Sequencer (GE Healthcare, Little Chalfont, UK), according to the manufacturer's instructions.

Sequence analysis

The obtained sequences were examined with the PHRED software (<http://bioinformatica.ucb.br/electro.html>) for quality analysis of chromatogram readings. The sequences were accepted if base quality was equal to or higher than 20. The consensus sequence was determined using the CAP3 software (<http://bioinformatics.iastate.edu/aat/sas.html>) and the sequence identity was verified with all sequences deposited in the GenBank using the BLAST software (<http://www.ncbi.nlm.nih.gov/BLAST>).

The L1 ORF of the Brazilian isolate was predicted by analysis with the ORF Finder tool (<http://www.ncbi.nlm.nih.gov/gorf/gorf.html>). The alignment and degree of similarity among sequences at both nucleotide and amino acid levels were determined using BIOEDIT version 5.0.9 software (Hall, 1999). The phylogenetic tree was obtained by the Neighbour-joining method with the Kimura two-parameter distance estimate (Kimura, 1980), using MEGA version 3.1 program (Kumar et al., 2004). Bootstrap support values were determined for 1000 replications.

Results

The first L1 segment of the Brazilian isolate could be achieved by a semi-nested PCR system (SN-PCR) employing L2Bf/FAP64 primers in the first round, and L2Bf/L1Br primer pair in the second round, which yielded an amplicon of 435 bp. The use of the FAP59/FAP64 (475 bp) and L1Bf/LCRBr (1128 bp) primer sets allowed the amplification of the remaining portions of the same gene (figure 1).

A consensual sequence of 1804 nt, that spans from nt 5385 to 7184 of BPV-4, was achieved from L2Bf/L1Br, FAP59/FAP64 and L1Bf/LCRBr overlapping sequences of the BPV/BR-UEL2 isolate.

Phylogenetic analysis employing complete L1 ORF sequences revealed that the BPV/BR-UEL2 isolate is related with BPV types held in *Xipapillomavirus* genus (Figure 2). Besides, by pairwise DNA sequence alignment, this isolate displayed the highest L1 nucleotide sequence similarity with BPV type 4 (78%), suggesting its classification in the *Xipapillomavirus* genus. On the other hand, when the comparison was determined at the amino acid level, the percentage identity with the BPV-4 was 83,6%.

In regard to amplification of DNA samples previously known to BPV-6 presence, the three overlapping amplicons could be obtained in all samples tested.

Discussion

In the current study, we have stated the phylogenetic position of a Brazilian potential novel BPV type, the isolate BPV/BR-UEL2, through the determination of its entire L1 nucleotide sequence by a PCR assay employing degenerate primers.

Despite several attempts in reaching a distinct band by employing the L2Bf/L1Br primer pair at diverse annealing temperatures, only weak bands with background amplification could be obtained to the BPV/BR-UEL2 isolate. Therefore, the upstream region of its L1 ORF was obtained by a SN-PCR whose first round was performed with L2Bf/FAP64 primers, while the second employed the L2Bf/L1Br primer pair. On L1Bf/LCRBr PCR reaction, the expected amplicon could be achieved, with great intensity, by using annealing temperatures ranging from 50 to 57°C.

As demonstrated by both the pairwise DNA sequence alignment and the phylogenetic analysis with other BPV types whose complete L1 sequences are available, the referred isolate was closest related with the BPV-4, being classified in *Xipapillomavirus* genus, in which are also found BPV-3, -6, and the most recently described types, BPV-9 and -10. The L1 nucleotide sequence of our isolate presented identities with the *Xipapillomavirus* representatives ranging from 71 to 78%, while similarities with other genera representatives ranged from 55,6 to 55,9%. A phylogenetic analysis based on amino acid alignments was also done and the generated tree presented a topology very similar to that based on nucleic acid alignment (data not shown).

When compared with other BPV genera, the *Xipapillomavirus* genus has demonstrated a promising great diversity in BPV types. Such fact has been pointed by diverse studies in which several putative new BPV types have been comprised together with representatives of this genus; e.g. BAA-1, BAPV-3, -8, -9 and -10, and BPV/BR-UEL3 (Antonsson and Hansson, 2002; Ogawa et al., 2004; Claus et al., 2008a, *in press*).

The BPV type 4 has been associated with tumors of the alimentary canal of cattle (Campo et al., 1980, 1994; Borzacchiello et al., 2003). Differently, our Brazilian isolate was detected from a skin wart located in the axillary region of a dairy cow, and then was associated with cutaneous papillomatosis.

Despite the closest similarity with BPV-4, the L1 ORF encoded protein of this Brazilian isolate consisted of 532 amino acids, such as L1 protein of BPV-9, a new described *Xipapillomavirus* type, which consisted of 531 amino acids. Otherwise, the BPV-4 L1 ORF codes for a protein of 506 amino acids. Additionally, the ORF analysis of the obtained consensual sequence demonstrated an overlapping pattern between L2 and L1, which could also be verified in BPV-9 and -10, and differed from observed in BPV-4.

To evaluate the ability of the designed primers on amplifying the expected segments of other *Xipapillomavirus* representative, the same PCR strategy was applied to some DNA samples from skin warts previously known to presence of BPV type 6. Differently from our putative novel BPV type, the upstream fragment of L1 gene of BPV-6 could be achieved by PCR employing the L2Bf/FAP64 primer set, whereas the subsequent L1 segments were obtained by using the same primer pairs as performed to BPV/BR-UEL2 isolate (data not shown). The specificity of the amplified products was confirmed for one of these samples through the analysis of the resulting consensual sequence.

PCR assays with degenerate primers displaying a high degree of nucleotide identity with conserved regions in L1 gene, and primarily aimed for detection of cutaneous or genital

HPV types, have been satisfactorily applied for the detection of a broad range of PV types in both humans and other animal hosts. Some advantages presented by such methods have been the detection of unreported PV types, the possibility of performing reliable studies of PV prevalence, in skin lesions and normal skin, and a rapid identification of the PV type through a single PCR reaction (Manos et al., 1989; Forslund et al., 1999).

The strategy developed in this study involved the use of three pair of degenerate primers, being two of them specifically designed for amplification of L1 gene of some *Xipapillomavirus* representatives. It has showed of great value once it allowed the achieving of entire L1 gene sequence, unambiguously and easily, and thus the determination of the correct phylogenetic position of an uncharacterized BPV type.

The use of simple and rapid methods to obtain the whole L1 gene sequence, such as the strategy designed and applied in this study, is of fundamental importance not only for stating the genetic classification. The ready availability of entire L1 nucleotide sequences, from all putatively new BPV types detected so far, could allow an improvement of the current PCR assays. Since the degenerate primers which have been employed were primarily designed to amplify only HPV sequences, an adequacy of such primers to L1 sequences from BPV types would be necessary. Given the possibility to increase the detection of novel BPV types by an optimized degenerate primer PCR approach, the actual genotype diversity for the bovine species could extend substantially.

In Brazil, despite the relatively common occurrence of BPV infections, the identification of BPV types in cattle herds is still sporadic. Besides, the few studies that have been done usually involve the use of type-specific primers and determined the presence of BPV types 1 and 2 (Dos Santos et al., 1998; De Freitas et al., 2003; Wosiacki et al., 2005, 2006). Recently, the use of the FAP59/FAP64 primer pair enabled the identification both of previously described BPV types (BPV-1, -2, -6, and -8) and of four putative new BPV types,

not yet described around the world, from skin warts of cattle from Parana state (Claus et al., 2007; 2008a, *in press*; 2008b, *in press*).

In the present study, we determine the phylogenetic position of an uncharacterized BPV type detected from a cutaneous lesion of a dairy cow. The realization of further studies involving the molecular epidemiology of BPV infections, in Brazilian cattle herds as much in diverse geographical areas around the world, could indicate its prevalence throughout the cattle as well as check its association with cutaneous lesions. In the most recent example, the BPV-8, the first detection was made from papillomas and healthy skin of teats from Japanese cattle herds, and subsequent investigations have revealed its presence in papilloma specimens from a European bison kept in Slovakia and a Brazilian cow (Literák et al., 2006; Tomita et al., 2007; Claus et al., 2008b, *in press*).

Due to the fact that there are so few studies involving BPV molecular characterization, one might speculate that the BPV/BR-UEL2 is spread in susceptible herds from many regions, especially in Brazil.

References

Alfieri AA, Parazzi ME, Takiuchi E, Médici KC, Alfieri AF. Frequency of group A rotavirus in diarrhoeic calves in Brazilian cattle herds, 1998-2002. *Trop Anim Health Prod* 2006; 38 (7-8): 521-526.

Antonsson A, Hansson BG. Healthy skin of many animal species harbors papillomaviruses which are closely related to their human counterparts. *J Virol* 2002; 76 (24): 12537-12542.

Boom R, Sol CJ, Salimans MM, Jansen CL, Wertheim-van Dillen PM, van der Noordaa J. Rapid and simple method for purification of nucleic acids. *J Clin Microbiol* 1990; 28 (3): 495-503.

Borzacchiello G, Ambrosio V, Roperto S, Poggiali F, Tsirimonakis E, Venuti A, et al. Bovine papillomavirus type 4 in oesophageal papillomas of cattle from the south of Italy. *J Comp Pathol* 2003; 128 (2-3): 203-206.

Campo MS, Moar MH, Jarrett WFH, Laird HM. A new papillomavirus associated with alimentary cancer in cattle. *Nature* 1980; 286 (5769): 180-182.

Campo MS, Moar MH, Laird HM, Jarrett WFH. Molecular heterogeneity and lesion site specificity of cutaneous bovine papillomaviruses. *Virology* 1981; 113 (1): 323-335.

Campo MS, Coggins LW. Molecular cloning of bovine papillomavirus genomes and comparison of their sequence homologies by heteroduplex mapping. *J Gen Virol* 1982; 63 (2): 255-264.

Campo MS, O'neil BW, Barron RJ, Jarrett WF. Experimental reproduction of the papilloma-carcinoma complex of the alimentary canal in cattle. *Carcinogenesis* 1994; 15 (8): 1597-1601.

Campo MS. Animal models of papillomavirus pathogenesis. *Virus Res* 2002; 89 (2): 249-261.

Chen EY, Howley PM, Levinson AD, Seeburg PH. The primary structure and genetic organization of the bovine papillomavirus type 1 genome. *Nature* 1982; 299 (5883): 529-534.

Claus MP, Vivian D, Lunardi M, Alfieri AF, Alfieri AA. Análise filogenética de papilomavírus bovino associado com lesões cutâneas em rebanhos do Estado do Paraná. *Pesq Vet Bras* 2007; 27 (7): 314-318.

Claus MP, Lunardi M, Alfieri AF, Ferracin LM, Fungaro MHP, Alfieri AA. Identification of unreported putative new bovine papillomavirus types in Brazilian cattle herds. *Vet Microbiol* 2008a; *in press*.

Claus MP, Lunardi M, Alfieri AF, Sartori D, Fungaro MHP, Alfieri AA. Identification of the recently described new type of bovine papillomavirus (BPV-8) in Brazilian beef cattle herd. *Pesq Vet Bras* 2008b; *in press*.

De Freitas AC, De Carvalho C, Brunner O, Birgel-Junior EH, Dellalibera AMMP, Benesi FJ, et al. Viral DNA sequences in peripheral blood and vertical transmission of the virus: a discussion about BPV-1. *Braz J Microbiol* 2003; 34: 76-78.

De Villiers EM, Fauquet C, Broker TR, Bernard HU, Zur Hausen H. Classification of papillomaviruses. *Virology* 2004; 324 (1): 17-27.

Dos Santos RCS, Lindsey CJ, Ferraz OP, Pinto JR, Mirandola RS, Benesi FJ, et al. Bovine papillomavirus transmission and chromosomal aberrations: an experimental model. *J Gen Virol* 1998; 79 (Pt 9): 2127-2135.

Forslund O, Antonsson A, Nordin P, Stenquist B, Hansson BG. A broad range of human papillomavirus types detected with a general PCR method suitable for analysis of cutaneous tumours and normal skin. *J Gen Virol* 1999; 80 (Pt 9): 2437-2443.

Hall TA. BioEdit: a user-friendly biological sequence alignment editor and analysis program for Windows 95/98/NT. *Nucleic Acids Symp Ser* 1999; 41: 95-98.

Hatama S, Nobumoto K, Kanno T. Genomic and phylogenetic analysis of two novel bovine papillomaviruses, BPV-9 and BPV-10. *J Gen Virol* 2008; 89 (Pt 1): 158-163.

Howley PM, Lowy DR. Papillomaviruses and their replication. In: Knipe DM, Howley PM (Editors), *Fields' Virology*. 4th edn. Philadelphia: Lippincott Williams and Wilkins; 2001. p 2197-2229.

Jarrett WFH, Campo MS, O'neil BW, Laird HM, Coggins LW. A novel bovine papillomavirus (BPV-6) causing true epithelial papillomas of the mammary gland skin: a member of a proposed new BPV subgroup. *Virology* 1984; 136 (2): 255-264.

Kimura M. A simple method for estimating evolutionary rates of base substitution through comparative studies of nucleotide sequences. *J Mol Evol* 1980; 16 (2): 111-120.

Kumar S, Tamura K, Nei M. MEGA3: Integrated software for Molecular Evolutionary Genetics Analysis and sequence alignment. *Brief Bioinform* 2004; 5 (2): 150-163.

Literák I, Tomita Y, Ogawa T, Shirasawa H, Smíd S, Novotný L, et al. Papillomatosis in a European bison. *J Wildl Dis* 2006; 42 (1): 149-153.

Maeda Y, Shibahara T, Wada Y, Kadota K, Kanno T, Uchida I, et al. An outbreak of teat papillomatosis in cattle caused by bovine papilloma virus (BPV) type 6 and unclassified BPVs. *Vet Microbiol* 2007; 121 (3-4): 242-248.

Manos MM, Ting Y, Wright DK, Lewis AJ, Broker TR, Wolinky SM. The use of polymerase chain reaction amplification for the detection of genital human papillomaviruses. *Cancer Cell* 1989; 7: 209-214.

Ogawa T, Tomita Y, Okada M, Shinozaki K, Kubonoya H, Kaiho I, et al. Broad-spectrum detection of papillomaviruses in bovine teat papillomas and healthy teat skin. *J Gen Virol* 2004; 85 (Pt 8): 2191-2197.

Ogawa T, Tomita Y, Okada M, Shirasawa H. Complete genome and phylogenetic position of bovine papillomavirus type 7. *J Gen Virol* 2007; 88 (Pt 7): 1934-1938.

Pfister H, Linz U, Gissmann L, Huchthausen B, Hoffman D, Zur Hausen H. Partial characterization of a new type of bovine papillomavirus. *Virology* 1979; 96 (1): 1-8.

Sambrook J, Russell DW. *Molecular Cloning: A Laboratory Manual*. 3rd edn. New York: Cold Spring Harbor Laboratory; 2001.

Thompson J, Higgins D, Gibson T. CLUSTAL W: improving the sensitivity of progressive multiple sequence alignment through sequence weighting, position-specific gap penalties and weight matrix choice. *Nucleic Acids Res* 1994; 22 (22): 4673-4680.

Tomita Y, Literak I, Ogawa T, Jin Z, Shirasawa H. Complete genomes and phylogenetic positions of bovine papillomavirus type 8 and a variant type from a European bison. *Virus Genes* 2007; 35 (2): 243-249.

Wosiacki SR, Barreiro MAB, Alfieri AF, Alfieri AA. Semi-nested PCR for detection and typing of bovine papillomavirus type 2 in urinary bladder and whole blood from cattle with enzootic haematuria. *J Virol Meth* 2005; 126: 215-219.

Wosiacki SR, Claus MP, Alfieri AF, Alfieri AA. Bovine papillomavirus type 2 detection in the urinary bladder of cattle with chronic enzootic haematuria. *Mem Inst Oswaldo Cruz* 2006; 101 (6): 635-638.

Table 1 – Sequence and features of polymerase chain reaction primers

Primer	Genomic region targeted	Polarity	Sequence	Nucleotide positions ^a	Degeneracy degree
L2Bf	L2	+	5'GTIAARYTITTYATHAAYGAYGC3'	5385-5407	96
FAP59 ^b	L1	+	5'TAACWGTIGGICAYCCWTATT3'	5729-5749	8
L1Br	L1	-	5'AASACTCTGAATTGACTGCC3'	5794-5813	2
L1Bf	L1	+	5'GRGAGCAYTGGGAYAAAG3'	6089-6106	8
FAP64 ^b	L1	-	5'CCWATATCWWHCATITCICCATC3'	6175-6197	36
LCRBr	LCR	-	5'CWRCATTTTATTKSSAASATTC3'	7181-7202	64

^a Relative position in BPV-4 genome.

^b Forslund et al. (1999).

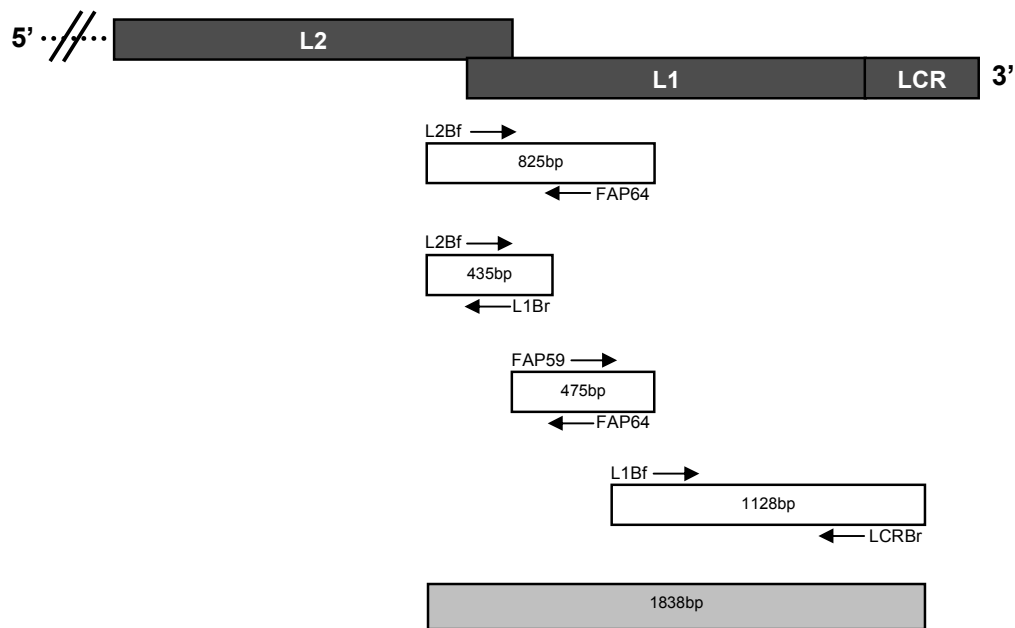


Fig. 1. Schematic diagram showing the relative positions of the overlapping PCR fragments in L2, L1 and LCR regions of BPV/BR-UEL2 isolate. The length of each amplicon is indicated into the white box, while the primer sets are shown as arrows. The grey box represents the consensual sequence obtained.

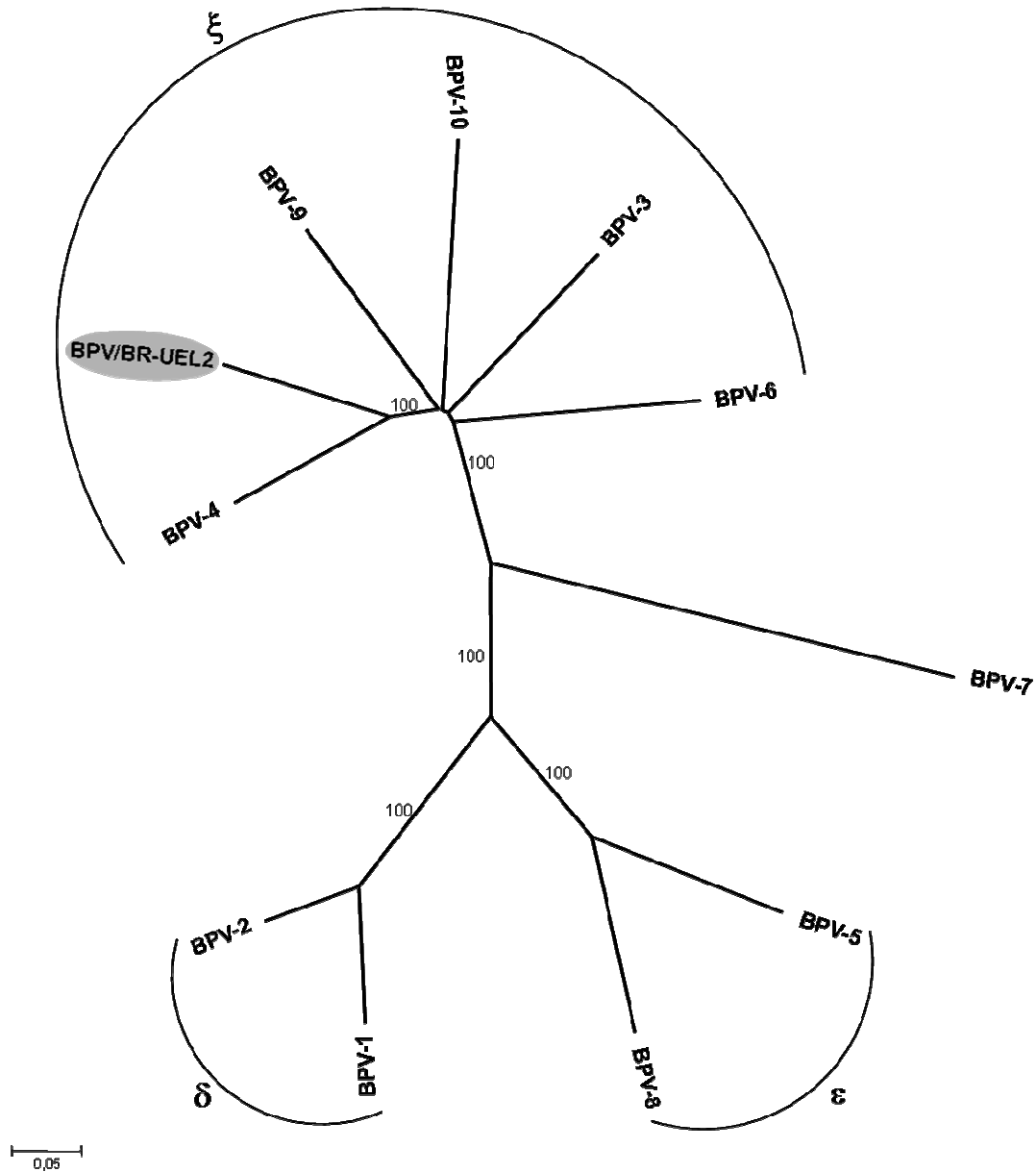


Fig. 2. Neighbour-joining phylogenetic tree of L1 ORFs (nt) of the BPVs, including that of the BPV/BR-UEL2 isolate (indicated by shading). The tree is divided into the previously determined genera *Deltapapillomavirus* (BPV-1 and -2), *Epsilonpapillomavirus* (BPV-5 e -8), *Xipapillomavirus* (BPV-3, -4, -6, -9, -10) and an unassigned PV genus (BPV-7). The numbers at the internal nodes represent the bootstrap support values determined for 1000 replications.

4 CONCLUSÕES

- O sistema de PCR desenvolvido neste trabalho permitiu a amplificação da totalidade do gene que codifica a proteína estrutural L1 de um provável novo tipo de BPV (BPV/BR-UEL2);
- A seqüência consensual representativa da ORF L1 da amostra BPV/BR-UEL2, obtida a partir de clones, e a sua comparação com seqüências do mesmo gene de outros tipos de BPV descritos anteriormente, permitiu a classificação deste provável novo tipo de BPV no gênero *Xipapillomavirus*;
- A aplicabilidade deste sistema, envolvendo o uso de *primers* genéricos, em outro representante do gênero *Xipapillomavirus* (BPV tipo 6) pôde ser confirmada pela obtenção dos *amplicons* correspondentes em amostras previamente caracterizadas como BPV-6, e pela confirmação da especificidade dos mesmos por meio de clonagem, seqüenciamento e análise filogenética.

APÊNDICES

APÊNDICE A – Lista de Reagentes

1. 100 mM dNTP Set, 4 x 250 uL; 25 umol each (100 mM dATP Solution, 100 mM dCTP Solution, 100 mM dGTP Solution, 100 mM dTTP Solution) (Invitrogen Life Technologies®)
2. 10 x PCR-Buffer (200 mM Tris-HCl, pH 8.4, 500 mM KCl) (Invitrogen Life Technologies®)
3. 123 bp DNA Ladder (Invitrogen Life Technologies®)
4. 2-Mercapto-ethanol (C₂H₆O₅) P.M. 78,13 (Fluka®)
5. Acetona, P.A. (CH₃COCH₃) P.M. 58,08 (Dinâmica®)
6. Ácido acético glacial, P.A. (CH₃COOH) P.M. 60,05 (Nuclear®)
7. Ácido bórico (H₃BO₃) P.M. 61,83
8. Ácido clorídrico (HCl) P.M. 36,46 (Reagen®)
9. Ácido etilenodiaminotetraácido Sal di-sódico - EDTA, P.A. (C₁₀H_MN₂O₈Na₂2H₂O) P.M. 372,24 (Reagen®)
10. Agarose (Gibco BRL®)
11. Ágar (Himedia Laboratories®)
12. Álcool etílico absoluto (C₂H₂OH) P.M. 46,07 (Nuclear®)
13. Álcool isoamílico ((CH₃)₂CHCH₂CH₂OH) P.M. 88,15 (Synth®)
14. Ampicilina trihidratada (USB®)
15. Azul de bromofenol (Sigma®)
16. Cloreto de Potássio, P.A. (KCl) P.M. 74,56 (Reagen®)
17. Cloreto de Sódio, P.A. (NaCl) P.M. 58,45 (Reagen®)
18. Clorofórmio, P.A. (CHCl₃) P.M. 119,38 (Dinâmica®)
19. Dodecil Sulfato de Sódio - Lauril Sulfato de Sódio - SDS (C₁₂NaO₄S) P.M. 288,38 (Synth®)
20. Ethidium bromide (C₂₁H₂₀N₃Br) P.M. 394,3 (Sigma®)
21. Extrato de Levedura (USB®)
22. Gibco BRL - Concert™ Rapid Plasmid purification System (Invitrogen Life Technologies®)
23. Glicina, P.A. (Nuclear®)
24. Guanidine isothiocyanate P.M. 118,16 (Gibco BRL®)
25. Hidróxido de Sódio, P.A. (NaOH) P.M. 40,00 (Dinâmica®)
26. Hidroximetil amino metano - TRIS 99% P.M. 121,14 (Inlab®)
27. Lambda DNA - (Invitrogen Life Technologies®)

28. Metanol, P.A. (CH_3OH) P.M. 32,04 (Allkimia®)
29. *Platinum* Taq DNA Polymerase recombinant 500 units (Invitrogen Life Technologies®)
30. PureLink Quick Gel Extraction Kit (Invitrogen Life Technologies®)
31. Sacarose, P.A. - sucrose ($\text{C}_{12}\text{H}_{22}\text{O}_{11}$) P.M. 342,31 (Reagen®)
32. Silicon dioxide (SiO_2) P.M. 60,08 (Sigma®)
33. TOPO TA Cloning kit for Sequencing (Invitrogen Life Technologies®)
34. Triton x-100
35. Triptona (Acumedia Manufacturers®)

APÊNDICE B – Soluções e Tampões

- **Hidratação da sílica**
 - 60 g de sílica (SIGMA®)
 - Adicionar 500 mL de água MilliQ autoclavada
 - Agitar lentamente e manter em repouso durante 24 hs
 - Por sucção, desprezar 430 mL do sobrenadante
 - Ressuspender a sílica em 500 mL de água bidestilada
 - Manter em repouso durante 5 hs para sedimentar
 - Desprezar 440 mL do sobrenadante
 - Adicionar 600 µL de HCl para ajustar o pH (pH=2,0)
 - Aliquotar e autoclavar

- **Solução L6**
 - 120 g de isotiocianato de guanidina (GUSCN)
 - 100 mL de TRIS-HCl 0,1 M pH 6,4
 - 22 mL de EDTA 0,2 M pH 8,0
 - 2,6 mL de Triton x-100

- **Solução L2**
 - 120 g de tiocianato de guanidina (GUSCN)
 - 100 mL de TRIS-HCl 0,1 M pH 6,4

- **Tampão de Amostra**
 - Azul de bromofenol 0,25%
 - Sacarose - sucrose (C₁₂H₂₂O₁₁) 45%

- **Tampão de corrida: TBE (TRIS - Ácido bórico - EDTA) 10 x []**
 - 0,89 M TRIS
 - 0,89 M ácido bórico
 - 0,02 M EDTA dissodium
 - Água bidestilada qsp. 1 litro
 - pH = 8,4

- **Tampão fosfato salina (PBS)**
 - 137 mM cloreto de sódio (NaCl)
 - 3 mM cloreto de potássio (KCl)
 - 8 mM sódio fosfato dibásico anidro (Na_2HPO_4)
 - 15 mM potássio fosfato monobásico ($\text{K}_2\text{H}_2\text{PO}_4$)
 - Água MilliQ autoclavada q.s.p. 1 litropH = 7,2

- **Fenol / clorofórmio / álcool isoamílico (24:24:1)**
 - 24 mL fenol saturado
 - 24 mL clorofórmio
 - 1 mL álcool isoamílico

- **Meio Luria Bertani (LB) sólido para 500 mL**
 - 5 g de triptona
 - 2,5 g de extrato de levedura
 - 2,5 g de NaCl
 - Dissolver em 400 mL de água destilada
 - Completar para 500 mL (becker).
 - Pesar 3,25 g de ágar em cada erlenmeyer.
 - Adicionar 250 mL da solução a 3,25g de ágar em cada erlenmeyer que será autoclavado.

- **Meio LB líquido**
 - 5 g de triptona
 - 2,5 g de extrato de levedura
 - 2,5 g de NaCl
 - Dissolver em 400 mL de água destilada e completar para 500 mL.
 - Aliquotar a solução em tubos de 3 mL e 5 mL e autoclavar.

APÊNDICE C – Protocolo de Técnicas

- **Suspensão de Fragmentos de Tecidos**

- Triturar 1 g do fragmento do tecido (papiloma) com pistilo em gral de porcelana estéril
- Adicionar 9 mL de PBS 1x
- Homogeneizar em vórtex, congelar, descongelar rapidamente por 3 vezes
- Centrifugar a 4.000 x g /15 min
- Recolher 500 µL do sobrenadante em microtubos tipo eppendorf para extração do DNA

- **Lise Celular**

- 250 µL do sobrenadante do macerado
- Diluir em 250 uL de PBS 1x
- 50 µL de SDS 10 %
- 10 µL de proteinase K (0,2 mg/mL)
- Homogeneizar em vórtex por 10 s
- Incubar em banho-maria à 56°C / 30 min

- **Extração do DNA pela técnica fenol / clorofórmio / álcool isoamílico - sílica / isotiocianato de guanidina**

- Adicionar 500 µL de fenol / clorofórmio / álcool isoamílico, após a lise celular
- Homogeneizar em vórtex
- Incubar em banho-maria à 56°C / 15 min
- Homogeneizar em vórtex
- Centrifugar a 10.000 x g /12 min
- Recolher a fase aquosa em outro microtubo tipo eppendorf
- Adicionar 25 µL de sílica hidratada
- Adicionar 1.000 µL de solução L6
- Homogeneizar em vórtex
- Agitar durante 30 min em temperatura ambiente
- Centrifugar a 10.000 x g / 30 s
- Desprezar o sobrenadante em solução contendo NaOH 10 M
- Adicionar 500 µL de solução L2
- Homogeneizar em vórtex
- Centrifugar a 10.000 x g / 30 s
- Desprezar o sobrenadante em solução contendo NaOH 10M

- Adicionar 500 μ L de solução L2
 - Homogeneizar em vórtex
 - Centrifugar a 10.000 x g / 30 s
 - Desprezar o sobrenadante em solução contendo NaOH 10M
 - Adicionar 1.000 μ L de etanol 70% a -20°C
 - Homogeneizar em vórtex
 - Centrifugar a 10.000 x g / 30 s
 - Desprezar o sobrenadante
 - Adicionar 1.000 μ L de etanol 70% a -20°C
 - Homogeneizar em vórtex
 - Centrifugar a 10.000 x g / 30 s
 - Desprezar o sobrenadante
 - Adicionar 1.000 μ L de acetona PA a -20°C
 - Homogeneizar em vórtex
 - Centrifugar a 10.000 x g / 2 min
 - Desprezar o sobrenadante
 - Secar o pellet em banho-maria a 56°C / 15 min
 - Adicionar 50 μ L de água milliQ autoclavada
 - Homogeneizar em vórtex
 - Incubar em banho-maria à 56°C / 15 min
 - Homogeneizar em vórtex
 - Centrifugar a 10.000 x g / 2 min
 - Recolher o sobrenadante
 - Estocar a -20°C
- **Gel de agarose a 2%**
 - 1 g de agarose
 - 50 mL TEB 1 x
 - 30 μ L de brometo de etídio
- **Purificação de produto de PCR excisado do gel**
 1. Pesar o fragmento excisado do gel (até 400 mg) em um tubo de microcentrífuga (1,5 mL).
 2. Adicionar 30 uL do tampão GS1 para cada 10 mg de gel.

3. Incubar o tubo à 50°C / 15 min, homogeneizando a cada 3 min.
4. Após dissolver, incube por mais 5 min.
5. Colocar a coluna em um novo tubo e pipetar a solução anterior na coluna.
6. Centrifugar por 12.000 x g / 1 min.
7. Descartar o filtrado e recolocar a coluna no mesmo tubo.
8. Adicionar 700 µL de tampão W9 e incubar a temperatura ambiente / 5 min.
9. Centrifugar a 12.000 x g / 1 min.
10. Descartar o filtrado e recolocar a coluna.
11. Centrifugue a coluna a 12.000 x g / 1 min para remover o tampão residual.
12. Colocar a coluna em um novo tubo (1,5 mL).
13. Adicionar 20 µL de água a 65°C no centro da coluna.
14. Incubar a temperatura ambiente por 2 min.
15. Centrifugar a 12.000 x g / 2 min.

- **Ligação do produto da PCR ao vetor**

1. Em um tubo de microcentrífuga (0,6 mL) adicionar:

Solução do DNA a ser clonado	0,5 a 4 µL
Solução de sal	1,0 µL
H ₂ O estéril	6 µL q.s.p
Vetor TOPO	1,0 µL

2. Homogeneizar a reação delicadamente e incubar por 1h.
3. Manter a reação em gelo até proceder a transformação.

- **Pré-inoculação de *E.coli* One Shot®**

1. 3 mL de meio LB líquido autoclavado.
2. Acrescentar 15 µL de células para cada 3 mL de LB.
3. Homogeneizar lentamente o tubo com LB.
4. Incubar em *Shaker* à 37°C e 180 rpm, *overnight*.

- **Preparação de células competentes**

1. Diluir a pré-cultura (150 µL em 5 mL de meio LB líquido) e incubar à 37°C, 180 rpm, até DO_{600nm}=0,4-0,6 (aproximadamente 1h).

2. Logo após, deixar o tubo em banho de gelo por 5 min.
3. Centrifugar 3 mL da cultura em 2 tubos de microcentrífuga (1,5 mL em cada tubo), a 5000 rpm / 5 min.

OBS: Manter as células e soluções em banho de gelo.

4. Eliminar o sobrenadante por inversão do tubo e adicionar ao precipitado 500 μ L de 50mM CaCl₂.
5. Homogeneizar.
6. Transferir o conteúdo dos 2 tubos para outro tubo.
7. Manter em banho de gelo por 10 min.
8. Centrifugar a 5000 rpm / 5 min e eliminar o sobrenadante posteriormente.
9. Ressuspender as células em 300 μ L de 50mM CaCl₂.
10. Manter em banho de gelo por 20 min.
11. Aliquotar 50 μ L de células competentes em tubos de microcentrífuga e estocar a -20°C.

- **Transformação**

1. Adicionar 3 μ L do produto da ligação a 50 μ L de células competentes e colocar em banho de gelo por 20 min.
2. Incubar a mistura por 2 min a 42°C em banho-maria.
3. Transferir imediatamente para banho de gelo.
4. Adicionar 1 mL de LB líquido e incubar por 1h a 37°C sob agitação (180 rpm).
5. Centrifugar a 5.000 rpm / 10 min.
6. Descartar o sobrenadante.
7. Ressuspender o sedimento em 100 μ L de LB líquido.
8. Semear em duas placas com LB sólido, contendo 75 ug / mL de ampicilina, com o auxílio da alça de Drigalsk.
9. Incubar em estufa a 37°C por 24h.

- **Extração do plasmídeo**

1. Aliquotar 5 μ L de meio LB líquido em um tubo de ensaio.
2. Adicionar ampicilina (100 μ g /mL).
3. Com o auxílio de um palito, realizar a semeadura de uma colônia de bactérias no tubo.
4. Incubar sob agitação (180 rpm) a 37°C / 12 h.
5. Transferir 1,5 mL da cultura em um tubo de microcentrífuga e centrifugar a 5.000 rpm/ 12 min. Descartar o sobrenadante. Repetir o procedimento.

6. Adicionar 210 μL de G1 para ressuspender as células.
7. Adicionar 210 μL de G2 para lisar as células e inverter gentilmente cinco vezes.
Manter à temperatura ambiente por 5 min.
8. Adicionar 280 μL de G3 para neutralizar e inverter gentilmente cinco vezes.
Centrifugar a 12.000 rpm / 10 min.
9. Transferir o sobrenadante para a coluna.
10. Adicionar 700 μL de G4 (tampão de lavagem com etanol) no centro da coluna.
11. Centrifugar a 12.000 rpm / 1 min (duas vezes).
12. Adicionar 75 μL de água no centro da coluna. Incubar a temperatura ambiente por 1 min.
13. Centrifugar a 12.000 rpm / 2 min.

ANEXOS

ANEXO A – Sequência do gene L1 do isolado BPV/BR-UEL2

```

1   ATG ACA CAG CTA CTT TTT TTC TAC ATC CCA GTC TGC TCA GAA AAC ATA AAC ATA AAC ATT 60
1   M  T  Q  L  L  F  F  Y  I  P  V  C  S  E  N  I  N  I  N  I  20

61  GGT TTC TTT AAT GTT TTA CAG ATG TCA TTC TGG CTA CCA AAC TCA GCA AAG CTG TAT TTA 120
21  G  F  F  N  V  L  Q  M  S  F  W  L  P  N  S  A  K  L  Y  L  40

121 CCA CCA CCT ACA CCA GTC ACA CAA TTT CTT GAC ACG GAT GAC TTT GTG ACA CGC ACT GAC 180
41  P  P  P  T  P  V  T  Q  F  L  D  T  D  D  F  V  T  R  T  D  60

181 ATC TTT TAC CAC ACA AGC AGT GAC CGC TTG CTA TTT GTT GGC CAT CCA TAT TTT GAC CTG 240
61  I  F  Y  H  T  S  S  D  R  L  L  F  V  G  H  P  Y  F  D  L  80

241 AAA AAA GGA GGA AAC ACT GTA GTG CCA AAG GTT TCT GGC AGT CAA TTC AGA GTG TTT CGA 300
81  K  K  G  G  N  T  V  V  P  K  V  S  G  S  Q  F  R  V  F  R  100

301 ATG AAA TTT CCT GAC CCA AAT AAA TTC AGC TTT CAA TCT CCC TCT GTA TAT AAC CCT GAT 360
101 M  K  F  P  D  P  N  K  F  S  F  Q  S  P  S  V  Y  N  P  D  120

361 AAT CAG AGA TTA GTG TGG GCT GTA AGA GGC ATA GAA ATA TGT AGA GGA CAA CCT TTA GGA 420
121 N  Q  R  L  V  W  A  V  R  G  I  E  I  C  R  G  Q  P  L  G  140

421 GTA GGT GTT ACA GGG CAT CCA GCA TTT AAT AAG TTC AAG GAT GCT GAA AAC ATA AAT AGC 480
141 V  G  V  T  G  H  P  A  F  N  K  F  K  D  A  E  N  I  N  S  160

481 AAT TCT AAT CAA GGG GAG GAT GAT AGG GTT AAT GTA TGT GTG GAC CCC AAG CAA GTG CAG 540
161 N  S  N  Q  G  E  D  D  R  V  N  V  C  V  D  P  K  Q  V  Q  180

541 CCT TTT ATT GTG GGC TGT GTA CCA TGT GAT GGA GAG CAC TGG GAT AAA GCT ACA CCG TGC 600
181 P  F  I  V  G  C  V  P  C  D  G  E  H  W  D  K  A  T  P  C  200

601 CCC ACT GCA GAC ACA CAG CCA GGA GAT TGC CCA CCT ATT GAG CTG AAA AAC ACT AAA ATT 660
201 P  T  A  D  T  Q  P  G  D  C  P  P  I  E  L  K  N  T  K  I  220

661 CAA GAT GGA GAA ATG TGT GAT ACA GGG TGG GGC AAT TTA AAT TTT GCT ACT TTG CAG GCT 720
221 Q  D  G  E  M  C  D  T  G  W  G  N  L  N  F  A  T  L  Q  A  240

721 AGT AAG TCT GGT GTG CCC CTA GAT ATT GTT AAT CAA ACT GTG AAA TAC CCA GAT TTT TTA 780
241 S  K  S  G  V  P  L  D  I  V  N  Q  T  V  K  Y  P  D  F  L  260

781 AAA ATG GGG AGT GAT CCC TAT GGT AAT TCT ATG TTC TTT TAT GCA AAA CGA GAG CAA ATG 840
261 K  M  G  S  D  P  Y  G  N  S  M  F  F  Y  A  K  R  E  Q  M  280

841 TAT GTG AGG CAT TTG TGG GCA AGA GCA GGA ACT GTA GGG GAT GAC ATA CCT CCT GAT GGG 900
281 Y  V  R  H  L  W  A  R  A  G  T  V  G  D  D  I  P  P  D  G  300

901 GGA TAT TTT CTT TCG GGG GCA GCT AGA AGT CCT CTA CCT TCC TCA GTG TAC GTG GGT AGC 960
301 G  Y  F  L  S  G  A  A  R  S  P  L  P  S  S  V  Y  V  G  S  320

961 CCT AGT GGA TCT TTA GTT TCC AGC GAT CAG CAA ATC TAT AAT AGA CCA TTT TGG ATA CAA 1020
321 P  S  G  S  L  V  S  S  D  Q  Q  I  Y  N  R  P  F  W  I  Q  340

1021 AGG GCT CAA GGG GGA AAT AAT GGC ACT TGC TGG AAT AAT GAG CTT TTT GTA ACC GCG GTT 1080
341 R  A  Q  G  G  N  N  G  T  C  W  N  N  E  L  F  V  T  A  V  360

1081 GAT AGC ACC CGT GGT ACA AAT TTC AGT ATA TCT GTT CAC AAA GAT AAT CCC GAA GCT GGG 1140
361 D  S  T  R  G  T  N  F  S  I  S  V  H  K  D  N  P  E  A  G  380

1141 CCT CAG GAC ACC TAC AAA GCT GCA GAT TAT AAG CAT TAT TTG AGG CAT GTT GAG GAA TGG 1200
381 P  Q  D  T  Y  K  A  A  D  Y  K  H  Y  L  R  H  V  E  E  W  400

1201 GAG GTG TCC TTA GTT ATG CAG CTT TGT ATT GTG GAT CTA AAA CCA GAA TCT TTA GCT TAC 1260
401 E  V  S  L  V  M  Q  L  C  I  V  D  L  K  P  E  S  L  A  Y  420

1261 CTG CAC AAC ATG AAT TCC AGT ATT ATT GAA AAC TGG AAT TTA GGT TTT ATT CAG CCT CCA 1320
421 L  H  N  M  N  S  S  I  I  E  N  W  N  L  G  F  I  Q  P  P  440

1321 AAC AAT ATA GAA GAC CAT TAC AGA TTT ATA GAT TCA TTG GCT ACC CGT TGT CCC AAA AAA 1380
441 N  N  I  E  D  H  Y  R  F  I  D  S  L  A  T  R  C  P  K  K  460

```


ANEXO C – Normas de Publicação do periódico *Braz J Med Biol Res*

Scope and policy

The purpose of the BRAZILIAN JOURNAL OF MEDICAL AND BIOLOGICAL RESEARCH is to publish the results of original experimental research that contribute significantly to knowledge in medical and biological sciences. Preference will be given to manuscripts that develop new concepts or experimental approaches and are not merely repositories of data. Papers that report negative results require special justification for publication. Methodological papers shall be considered for publication provided they describe new principles or a significant improvement of an existing method.

Papers that will not be accepted for publication

- Studies on people not approved by an accredited Ethics Committee or without written informed consent from the subject or legal guardian.
- Studies on animals not approved by an accredited Ethics and Animal Care Committee.
- Manuscripts that report preliminary results or only confirm previously reported results.
- Manuscripts that describe the pharmacodynamics, bioavailability and toxicity of drugs in people or animals.
- Manuscripts that deal with transcultural adaptation and validation of instruments of measurements.
- Manuscripts that translate a text published in another language and validate it on local patients.
- Manuscripts that use questionnaires translated from the language of another country and their validation in local patients.

Page charges

The Journal will bill authors for "page charges" for all accepted papers. All authors are expected to pay the "page charges". R\$960/paper for Brazilian authors and US\$500/paper for authors outside Brazil.

Page charges will be billed to the Corresponding Author by the journal at the time the paper is accepted.

Please contact Reinaldo de Souza (bjournal@fmrp.usp.br) if you have any questions.

Manuscript criteria and information

The Brazilian Journal of Medical and Biological Research is a peer-reviewed electronic journal published monthly by the Associação Brasileira de Divulgação Científica (ABDC).

Submission of a manuscript to the Brazilian Journal implies that the data have not been published previously and will not be submitted for publication elsewhere while the manuscript is under review.

The following represent "prior publication": any printed material in excess of 500 words describing results or methods of a submitted/in press manuscript; published tables or illustrations that duplicate the content of a manuscript; electronic manuscripts or posters available via the Internet. When part of the material in a manuscript has been presented as a

preliminary communication or in an unrefereed symposium, this should be cited as a footnote on the title page and a copy should accompany the submitted manuscript.

Manuscript Submission

Complete the form for submission at <http://www.bjournal.com.br/> and send the manuscript as an attachment to the cover letter to bjournal@fmrp.usp.br or bjournal@terra.com.br.

The cover letter should contain the following information:

- Title of article.
- Name(s) of all author(s).
- A statement signed by the corresponding author that written permission has been obtained from all persons named in the acknowledgements should be sent by fax to +55-16-3633-3825 or 3630-2778.
- If a version of the manuscript has been previously submitted for publication to another journal, include comments from the peer reviewers and indicate how the authors have responded to these comments.
- Papers in the area of Clinical Investigation should include a statement indicating that the protocol has been approved by the Hospital Ethics Committee (Hospital with which at least one of the authors is associated) and that written informed consent was obtained from all participants.
- Animal experimentation should be carried out according to institutional guidelines for experimental use of animals.
- The authors should obtain written permission to reproduce figures and tables from other sources.

Copyright

Most of the provisions of the United States Copyright Act of 1976 became effective on Jan. 1, 1978. All published manuscripts become the permanent property of the Brazilian Journal of Medical and Biological Research and may not be republished without written permission from the Brazilian Journal.

All manuscripts must be accompanied by the following written statement, signed by the authors and sent by regular mail:

"The undersigned author(s) transfer all copyright ownership of the manuscript (title of article) to the Brazilian Journal of Medical and Biological Research, in the event the work is published. The undersigned warrant(s) that the article is original, does not infringe upon any copyright or other proprietary right of any third party, is not under consideration by another journal, and has not been previously published. The author(s) confirm that they have reviewed and approved the final version of the manuscript."

Paper Format

Eight to nine issues per year of the Brazilian Journal are organized into sections of Biosciences and authors should specify in the cover letter the specific section in which they prefer to publish their paper.

- Biochemistry and Molecular Biology
- Cell Biology
- Experimental Biology

- Immunology
- Neurosciences and Behavior
- Pharmacology
- Physiology and Biophysics

Three to four issues per year are dedicated to Clinical Investigation and authors should specify in the cover letter the specific section in which they prefer to publish their paper.

- Analytical, diagnostic and therapeutic techniques and instruments
- Blood, immunology and organ transplantation
- Cardiovascular, respiratory and sport medicine
- Digestive system
- Endocrine diseases, nutrition and metabolism
- Environmental factors of diseases
- Health care and community medicine
- Infectious agents and diseases
- Kidney and extracellular environment
- Neonatal medicine, growth and development
- Oncology
- Psychological processes, behavior and mental diseases
- Reproductive medicine
- Skeletal, muscle and nervous systems
- Skin and connective tissue diseases
- Surgical procedures, anesthesia and analgesia

Full-length Paper.

Each manuscript should clearly state its objective or hypothesis; the experimental design and methods used (including the study setting and time period, patients or participants with inclusion and exclusion criteria, or data sources and how these were selected for the study); the essential features of any interventions; the main outcome measures; the main results of the study, and a section placing the results in the context of published literature. A full-length paper should contain:

- an abstract of no more than 250 words
- no more than 6 key words
- a running title to be used as a page heading, which should not exceed 60 letters and spaces
- the text should be divided into separate sections (Introduction, Material and Methods, Results, Discussion), without a separate section for conclusions
- no more than 40 references (no exceptions will be made)
- authors should state in the cover letter that the manuscript is intended to be a full-length paper

Short Communication.

A short communication is a report on a single subject which should be concise but definitive. The scope of this section is intended to be wide and to encompass methodology and experimental data on subjects of interest to the readers of the Journal. A short communication should contain:

- an abstract of no more than 250 words
- no more than 6 key words

- a running title to be used as a page heading, which should not exceed 60 letters and spaces
- text not exceeding 12 double-spaced typed pages of 23 lines each
- a maximum of 2 figures or tables (or one of each)
- no more than 20 references (no exceptions will be made)
- a short communication should not be divided into separate sections (Introduction, Methods, etc.)
- authors should state in the cover letter that the manuscript is intended to be a short communication

Review Article.

A review article should provide a synthetic and critical analysis of a relevant area and should not be merely a chronological description of the literature. A review article by investigators who have made substantial contributions to a specific area in medical and biological sciences will be published by invitation of the Editors. However, an outline of a review article may be submitted to the Editors without prior consultation. If it is judged appropriate for the Journal, the author(s) will be invited to prepare the article for peer review. A minireview is focused on a restricted part of a subject normally covered in a review article. A minireview and review article should contain:

- an abstract of 250 words or less
- no more than 6 key words
- a running title to be used as a page heading, which should not exceed 60 letters and spaces
- no more than 60 references (no exceptions will be made)
- the text may be divided into sections with appropriate titles and subtitles
- authors should state in the cover letter that the manuscript is intended to be a review article

Concepts and Comments.

The Concepts and Comments section provides a platform for readers to present ideas, theories and views. Contributions should be presented with an abstract, 6 key words, a running title, no more than 20 references and up to 2 tables or figures

Case Report.

A case report should have at least one of the following characteristics to be published in the Journal:

- special interest to the clinical research community
- a rare case that is particularly useful to demonstrate a mechanism or a difficulty in diagnosis
- new diagnostic method
- new or modified treatment
- a text that demonstrates relevant findings and is well documented and without ambiguity.

Overviews.

An overview does not contain unpublished data. It presents the point of view of the author(s) in a less rigorous form than in a regular review or minireview and is of interest to the general reader

Cell Biology

The main characteristic of research papers in the area of Cell Biology is the emphasis on the integration at the cellular level of biochemical, molecular, genetic, physiological, and pathological information. This section considers manuscripts dealing with either prokaryotic or eukaryotic biological systems at any developmental stage. Papers on all aspects of cellular structure and function are considered to be within the scope of Cell Biology by the BJMBR. The Editors encourage submission of manuscripts defining cell biology as an area of convergence of several other research fields, especially manuscripts providing insights into the cellular basis of immunology, neurobiology, microbial pathology, developmental biology, and disease. Manuscripts containing purely descriptive observations will not be published. Manuscripts reporting new techniques will be published only when adequately validated and judged by the Editors to represent a significant advance.

Biological activity of natural products

The Journal will consider papers for publication which describe the activity of substances of biological origin only if they satisfy all of the following criteria:

- Papers should describe the separation of the crude material into fractions (not necessarily into homogeneous materials) with the fractions containing biological activity identified clearly in the separation scheme. Phytochemical studies should be accompanied by biological tests. A survey of pharmacological activity of plant extracts or teas will not be considered for publication.
- In addition to the demonstration of activity in one or more biological system, experiments must be performed attempting to provide information concerning the mechanism(s) of action of the substance(s) being tested.
- Sufficient experimental information must be provided to permit repetition of the preparation of fractions and the bioassay used.
- Sources should be identified completely, and, if plant material, a specimen should be classified by an expert and deposited in a local botanical garden, university or research institute. The name and institution of the person who classified the plant and the number of the voucher under which it was deposited should be provided in the Material and Methods section.
- The Journal does not publish toxicological studies.

Authorship information

Only those persons who contributed directly to the intellectual content of the paper should be listed as authors. Authors should meet all of the following criteria, thereby allowing persons named as authors to take public responsibility for the content of the paper.

- Conceived, planned and carried out the experiments that led to the paper or interpreted the data it presents, or both.
- Wrote the paper, or reviewed successive versions.
- Approved the final version.
- Holding positions of administrative leadership, contributing patients, and collecting and assembling data, however important to the research, are not by themselves criteria for authorship. Other persons who have made substantial, direct contributions to the work but cannot be considered authors should be cited in the acknowledgment section, with their permission, and a description of their specific contributions to the research should be given.

Permission for Reproduction.

The journal is registered with the Copyright Clearance Center, Inc., 222 Rosewood Dr., Danvers, MA 01923, USA. Consent is given for the copying of articles for personal or internal use of specific clients. This consent is given on the condition that the copier pays directly to the Center the per copy fee beyond that permitted by US Copyright Law. This consent does not extend to other kinds of copyright, such as for general distribution, resale, advertising, and promotional purposes, or for the creation of new collective works.

All other inquiries regarding copyrighted material from this publication, other than those that can be handled through the Copyright Clearance Center, should be directed in writing to Brazilian Journal of Medical and Biological Research, Av. Bandeirantes 3900, 14049-900 Ribeirão Preto, SP, Brazil. Fax: +55-16-3633-3825 or 3630-2778.

E-mail: bjournal@fmrp.usp.br or bjournal@terra.com.br

To request permission for reproduction, please send us a request via e-mail, fax or mail with the following information:

- Name, title, and institution
- Complete mailing address, phone number, fax number and e-mail
- Article title
- Year of publication, volume and issue number
- Authors' names
- Page numbers on which the material of interest appears
- Specific figure number or portion of text (or supply a photocopy)

Include the following information about the intended use:

- Title of book/journal in which Brazilian Journal material will appear
- Author(s)/editor(s)
- Publisher

Editorial review and processing

For complete explanation of the Editorial review policies, please see Editorial policies.htm

The receipt of manuscripts is acknowledged immediately. Once a paper has been evaluated by peer review, the authors will be notified of the editorial decision.

Galley proofs will be sent to authors for the correction of errors. Authors are responsible for all statements made in their article, including changes made by the copy editor and authorized by the corresponding author.

The dates of receipt and acceptance will be published for each article. If the paper is sent to the authors for revision and is not returned within 3 weeks, the date of submission will be revised. The date of acceptance will be assigned when the authors return the manuscript after the final correction for English style and clarity.

Manuscript preparation

Manuscripts should be submitted in English. Authors are requested to use American spelling, except, of course, for references whose titles should appear exactly as published. Guidance on grammar, punctuation, and scientific writing can be found in the following sources: *Scientific Style and Format: The CSE Manual for Authors, Editors, and Publishers*. 7th edn. Rockefeller University Press, Reston, 2006; *Medical Style and Format*. Huth EJ (Editor). ISI Press, Philadelphia, 1987, Marketed by Williams & Wilkins, Baltimore, MD. The Brazilian Journal of Medical and Biological Research follows the reference format of the Uniform Requirements for Manuscripts Submitted to Biomedical Journals, which can be found on the website of the National Library of Medicine (http://www.nlm.nih.gov/bsd/uniform_requirements.html).

Text Format

The text of a manuscript can only be accepted as a Microsoft Word file created with MS Word 6.5 or a later version as a ".doc" or ".rtf" document.

- Submit the manuscript by e-mail, in letter size format (8.5 x 11"), with wide margins of at least 1 inch (2.54 cm), 23 lines per page, which contains approximately 2,156 characters, including spaces.
- Use a serif font, preferably Times New Roman, 12 point type, including title page, abstract, text, acknowledgments, references, figure legends, and tables. Each page should contain the page number in the upper right-hand corner starting with the title page as page 1.
- Report all measurements in Système International, SI (<http://physics.nist.gov/cuu/Units>) and standard units where applicable (see below).
- Do not use abbreviations in the title or abstract and limit their use in the text.
- The length of the manuscript and the number of tables and figures must be kept to a minimum.
- Ensure that all references are cited in the text.
- Generic names must be used for all drugs. Instruments may be referred to by proprietary name; the name and country or electronic address of the manufacturer should be given in parentheses in the text.

Footnotes.

Text footnotes, if unavoidable, should be numbered consecutively in superscript in the manuscript and written on a separate page following the abstract.

Headings in text

- Position all headings flush with the left margin.
- Keep headings short (three or four words).
- Use only three types of headings in the text. Clearly indicate the type of level of headings by using the following typographic conventions.
- First-level: Only the 1st letter of the 1st word is capitalized, font size 11, bold type.
- Second-level: Only the 1st letter of the 1st word is capitalized, font size 9, bold type.
- Third-level: Only the 1st letter of the 1st word is capitalized, italic type.

Abbreviations and symbols

- Explain all abbreviations in the text, figure and table legends when they first appear. Keep the number of abbreviations to a minimum.
- Do not explain abbreviations for units of measurement [3 mL, not 3 milliliters (mL)] or standard scientific symbols [Na, not sodium (Na)].
- Abbreviate long names of chemical substances and terms for therapeutic combinations. Abbreviate names of tests and procedures that are better known by their abbreviations than by the full name (VDRL test, SMA-12).
- Use abbreviations in figures and tables to save space, but they must be defined in the legend.

Units.

The Système International (SI) (<http://physics.nist.gov/cuu/Units>) in metric units is used for units and abbreviations of units. Examples:

- s for second
- min for minute
- h for hour
- L for liter
- m for meter
- kDa for mass in kilodaltons
- 5 mM rather than $5 \times 10^{-3} \text{ M}$ or 0.005 M

Title page.

The title page should contain the following information:

- The title should be as short and informative as possible, should not contain non-standard acronyms or abbreviations, and should not exceed two printed lines.
- Initials and last name(s) of author(s) (matched with superscript numbers identifying institutions).
- Institution(s) (Department, Faculty, University, city, state, country) of each author (in Portuguese if authors are from Brazil).
- Acknowledgment of research grants and fellowships (agency and grant number).
- Name, complete mailing address, including zip code, telephone number, fax number and e-mail of author to whom correspondence should be sent.

Running Title.

This short title, to be used as a page heading, should not exceed 60 letters and spaces.

Key words.

A list of key words or indexing terms (no more than 6) should be included. A capital letter should be used for the first letter of each key word, separated by a semicolon. The Journal recommends the use of medical subject headings of Index Medicus for key words to avoid the use of several synonyms as entry terms in the index for different papers on the same subject. Remember, key words are used by the SciELO Database (see <http://www.scielo.br/bjmb>; articles search/subject) to index the article.

Abstract

- Since abstracts are published separately by Information Services, they should contain sufficient hard data to be evaluated by the reader.
 - The abstract should briefly and clearly present the problem, experimental approach, new results as quantitative data if possible, and conclusions.
 - The abstract should not exceed 250 words and should be written as a single paragraph double-spaced on a separate page following the title page.
 - Abbreviations should be kept to a minimum and must be defined at first citation.
 - If the use of a reference is unavoidable, the full citation should be given within the abstract.
- Note that the Brazilian Journal publishes unstructured abstracts.

Introduction.

This should state the purpose of the investigation, relationship to other work in the field, and justification for undertaking the research. An extensive listing or review of the literature is not recommended.

Material and Methods.

Sufficient information should be provided in the text or by referring to papers in generally available journals to permit the work to be repeated and to determine the suitability of the methods used for the objectives of the research.

Results.

The results should be presented clearly and concisely. Tables and figures should be used only when necessary for effective comprehension of the data. In some situations, it may be desirable to combine Results and Discussion in a single section.

Discussion.

The purpose of the Discussion is to interpret the results and relate them to existing knowledge. Information given elsewhere in the text, especially in Results, may be cited but not repeated in detail in the Discussion.

Acknowledgments.

When appropriate, briefly acknowledge technical assistance, advice and contributions from colleagues to the research. Financial support for the research and fellowships should be acknowledged on the title page.

Tables

- Tables must be numbered consecutively with Arabic numerals in the text.
- Tables must have a descriptive title.
- All explanatory information should be given in a footnote below the table.
- All abbreviations must be defined in this footnote, even if they are explained in the text.
- Tables must be understandable without referring to the text.

- Each table should be typed double-spaced on a separate page after the Reference section in the submitted manuscript (or, if exceptionally large or requiring special symbols or unusual treatment, the table should be submitted as an image as a "tif" or "jpg" file).
- Vertical and diagonal lines should not be used in tables; instead, indentation and vertical or horizontal space should be used to group data.
- Adapting/Reproducing Tables and Relevant Permissions. Acknowledgments of original sources of copied material should be given as a reference in the table footnote.

Figures

- All figures should have 300 dpi and be at least 5 inches (12.5 cm) wide.
- Figures must be numbered in the order in which they are cited in the text using consecutive Arabic numerals.
- Words in figures should have an initial capital letter followed by lower-case lettering; letter size and type should be uniform in style
- Do not insert figures within the text.
- Figures will be accepted only in "tif", "jpg", "cdr" or "eps" format prepared preferentially with Adobe Photoshop or Corel Draw. In case a graph was created with Microsoft Word or Excel, it should be saved in the original file format.
- Do not copy/paste graphs or figures from one program to another. For information on the preparation of figures in "tif", "jpg" "cdr" and "eps" formats, see <http://cjs.cadmus.com/da/>
- We cannot accept some application programs, such as Microsoft Office (Access), Corel Perfect Office (WordPerfect, Quattro Pro, Presentations), Lotus SmartSuite (Freelance Graphics, 1-2-3, Approach, WordPro), Harvard Graphics and SigmaPlot because they are not intended for the high resolution imaging. Graphs created in one of these programs and saved as "jpg" or similar also cannot be accepted
- Photomicrographs should include stain and magnification data at the end of the legend for each part of the figure. A magnification bar should be added to each photomicrograph. If no scale marker appears in the figure, the original magnification should be reported in the legend
- Figure legends should be typed double-spaced consecutively on a separate page.
- Figure legends must have a descriptive title and all explanatory information so that the figure is understandable without referring to the text
- All abbreviations and symbols must be defined in the legend, even if they are explained in the text.
- Adapting/reproducing figures and relevant permissions. Acknowledgment of original sources of copied material should be given.
- Color figures should be in RGB, at least 300 dpi. There is no charge for color figures.
- Check figures carefully before submission to ensure that proper versions are being sent and that there are no labeling errors.
- All figures with the exception of line drawings will be published exactly as the author sent them to the Journal and the reproduction quality will be the total responsibility of the author.

References

Authors are responsible for the accuracy and completeness of their references and for correct text citation. When possible, references in English should be cited. The reference list must be numbered consecutively in the order in which the references are first cited in the text, using arabic numerals, and must be typed double-spaced on separate sheets. In the text, citation of two or more references, within parentheses, should be separated by a comma

without a space (1,5,7); three or more consecutive references should be separated by a hyphen (4-9).

The Brazilian Journal of Medical and Biological Research follows the reference format of the Uniform Requirements for Manuscripts Submitted to Biomedical Journals, which can be found on the website of the National Library of Medicine (http://www.nlm.nih.gov/bsd/uniform_requirements.html). Use the Medline journal abbreviations and follow the reference style shown on the Website noted above, with several exceptions. See below for details. If the author uses the program "Reference Manager", copy the file containing the style of the Brazilian Journal of Medical and Biological Research and place it in the folder of "Styles". When submitting the manuscript, send the file produced in Reference Manager (".rmd") as an attachment.

The following information must be given in the list of references:

Standard article. Up to the first 6 authors followed by et al., Title, Journal (abbreviation), Year, Volume, Complete Pages.

- Xu J, Liu M, Liu J, Caniggia I, Post M. Mechanical strain induces constitutive and regulated secretion of glycosaminoglycans and proteoglycans in fetal lung cells. *J Cell Sci* 1996; 109 (Pt 6): 1605-1613.
- Poirier P, Lemieux I, Mauriege P, Dewailly E, Blanchet C, Bergeron J, et al. Impact of waist circumference on the relationship between blood pressure and insulin: the Quebec Health Survey. *Hypertension* 2005; 45: 363-367.
- The Cardiac Society of Australia and New Zealand. Clinical exercise stress testing. Safety and performance guidelines. *Med J Australia* 1996; 164: 282-284.

Abstract. Up to the first 6 authors followed by et al., Title, Journal (abbreviation), Year, Volume, Complete Pages (Abstract).

- Lima SM, Bonci DM, Grotzner SR, Ribeiro CA, Ventura DF. Loss of amacrine cells in MeHg-treated retinæ in a tropical fish. *Invest Ophthalmol Vis Sci* 2003; 44: E-5172 (Abstract).

Article accepted for publication but not yet published. Up to the first 6 authors followed by et al., Title, Journal (abbreviation), Year of expected publication, (in press) at the end of the citation.

- Janiszewski M, Lopes LR, Carmo AO, Pedro MA, Brandes RP, Santos CXC, et al. Regulation of NAD(P)H oxidase by associated protein disulfide isomerase in vascular smooth muscle cells. *J Biol Chem* 2005 (in press).

"Unpublished results", "Personal communication" and "Submitted papers". Reference should appear in the text with the individual name(s) and initials and not in the reference list.

- (Santos CS, da-Silva GB, Martins LT, unpublished results).
- It is assumed that the author has obtained written permission from the source when "personal communication" is cited.

Book, whole. Authors, Book title, Edition, City, Publisher, Year.

- Norman IJ, Redfern SJ. Mental health care for elderly people. New York: Churchill Livingstone; 1996.

Book, chapter. Authors, Chapter Title, Editors, Book title, Edition, City, Publisher, Year, Pages of citation.

- Kintzios SE. What do we know about cancer and its therapy? In: Kintzios SE, Barberaki MG (Editors), Plants that fight cancer. New York: CRC Press; 2004. p 1-14.
- Scheuer PJ, Lefkowitz JH. Drugs and toxins. In: Scheuer PJ, Lefkowitz JH (Editors), Liver biopsy interpretation. 6th edn. London: WB Saunders; 2000. p 134150.

Report

- WHO (World Health Organization), IPCS (International Program in Chemical Safety). Environmental health criteria: 118 Inorganic mercury. Geneva: World Health Organization; 1991.
- National Commission on Sleep Disorders Research. Wake up America: a national sleep alert. Washington: Government Printing Office; 1993.

Thesis

- Joselevitch C. Visão no ultravioleta em *Carassius auratus* (Ostariophysi, Cypriformes, Cyprinidae): estudo eletrofisiológico do sistema cone - células horizontais. [Master's thesis]. São Paulo: Instituto de Psicologia, USP; 1999.

Conference, Symposium Proceedings. Cite papers only from published proceedings.

- Hejzlar RM, Diogo PA. The use of water quality modelling for optimising operation of a drinking water reservoir. Proceedings of the International Conference Fluid Mechanics and Hydrology. 1999 Jun 23-26; Prague. Prague: Institute of Hydrodynamics AS CR; 1999. p 475-482.

Electronic citations (Online Journals). Ensure that URLs are active and available.

- American Academy of Ophthalmology. Diabetic retinopathy disease severity scale. Am Acad Ophthalmol http://www.aao.org/education/library/recommendations/international_dr.cfm; 2005.
- Simon JA, Hudes ES. Relationship of ascorbic acid to blood lead levels. JAMA <http://jama.ama-assn.org/cgi/content/abstract/281/24/2289>; 1999.

Internet communication. Ensure that URLs are active and available. Provide DOI, if available.

- Developmental toxicology. <http://www.devtox.org/nomenclature/organ.php>. Accessed June 27, 2005.
- CAPES Statistics. <http://www.capes.gov.br/capes/portal>. Accessed March 16, 2006.
- CNPq Plataforma Lattes, "Investimentos do CNPq em CT&I". <http://fomentonacional.cnpq.br/dmfomento/home/index.jsp>. Accessed March 16, 2006.

Audiovisual material

- Physician's Desk Reference (PDR). Release 2003.1AX. [CD-ROM]. Montvale:

Thomson PDR; 2003.

Computer programs

- Dean AG, Dean JA, Coulombier D, Brendel KA, Smith DC, Burton AH, et al. Epi info, version 6.04: a word processing database and statistics program for public health on IBM-compatible microcomputers. [Computer program]. Atlanta: Centers of Disease Control and Prevention; 1998.
- Statistical Package for the Social Sciences (SPSS). Version 12.0. [Computer program]. Chicago: SPSS Inc.; 2006.

Patent.

- Larsen CE, Trip R, Johnson CR. Methods for procedures related to the electrophysiology of the heart. Patent No. 5.529.067. Novoste Corporation; 1995.